

**HEADQUARTERS**  
**HEMLY TOOL SUPPLY INC.**  
 9700 Madison Road  
 Montville, OH 44064  
**1-800-445-1068**  
**Tel: 440-968-3228**  
**Fax: 440-968-3611**

**HEMLY TOOL**  
 SUPPLY, INC.  
**www.hemlytool.com**  
 e-mail: sales@hemlytool.com

**CT BRANCH**  
**HEMLY TOOL SUPPLY OF CT, LLC**  
 111 Pane Road  
 Newington, CT 06111  
**1-888-474-1300**  
**Tel: 860-436-4570**  
**Fax: 860-436-4807**

## New 2016 Special Prices

### Techniks EZ-LIFT Magnets

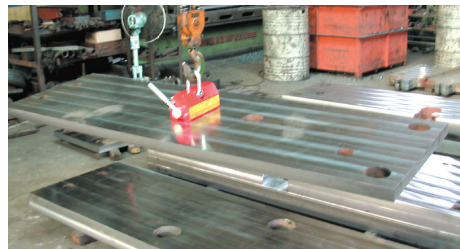
Our high-power, "rare earth" (neodymium) magnets are individually inspected, tested and certified for Quality, Lifting Capacity and Safety Factor.

#### Techniks EZ-Lift

- Safety Factor 3.5X Rated Load
- Lift up to 6,600 lbs. with one magnet  
...up to 13,500 lbs. with spreader bar
- Rare earth magnets never lose magnetism unless exposed to temperatures above 176°F



Order from your distributor, & get it shipped today!



**3.5X SAFETY FACTOR**

Get The Original, Get the Best!

Not all lifters are created equal. Don't be fooled by cheap, low-quality EZ-Lift imitations.

Techniks EZ-Lift magnets are:

- Individually Tested for Rating and Safety Factor
- Individually Certified for Quality and Rated Load
- Backed by our 100% Satisfaction Guarantee

Part No.	Rated Load steel plate	Rated Load round steel	List Price	Special Price	YOU SAVE!
ELM-100	220 lbs.	99 lbs.	\$290.00	<b>\$217.50</b>	\$72.50
ELM-300	660 lbs.	300 lbs.	\$660.00	<b>\$495.00</b>	\$165.00
ELM-600	1,320 lbs.	600 lbs.	\$1,095.00	<b>\$821.25</b>	\$273.75
ELM-1000	2,200 lbs.	990 lbs.	\$1,760.00	<b>\$1,320.00</b>	\$440.00
ELM-2000	4,400 lbs.	1,980 lbs.	\$3,420.00	<b>\$2,565.00</b>	\$855.00
ELM-3000	6,600 lbs.	2,970 lbs.	\$5,100.00	<b>\$3,825.00</b>	\$1,275.00

**HEADQUARTERS**  
**HEMLY TOOL SUPPLY INC.**  
 9700 Madison Road  
 Montville, OH 44064  
**1-800-445-1068**  
**Tel: 440-968-3228**  
**Fax: 440-968-3611**

**HEMLY TOOL**  
 SUPPLY, INC.  
**www.hemlytool.com**  
 e-mail: sales@hemlytool.com

**CT BRANCH**  
**HEMLY TOOL SUPPLY OF CT, LLC**  
 111 Pane Road  
 Newington, CT 06111  
**1-888-474-1300**  
**Tel: 860-436-4570**  
**Fax: 860-436-4807**

## "One Twist" Indicator Arms

"One Twist" adjustable design means you adjust all 3 joints with one twist of the knob.



### ECE Indicator Arms Features

- "One Twist" 360° adjustable joints
- Check concentricity on bench or your machine
- Powerful magnetic base

### Advantages of Hydraulic Arms

- Hydraulic arms are faster, stronger, and more precise than mechanical joints
- Hydraulic joints make fine adjustments easy because they don't lose position when loosened like mechanical arms



Indicator Arms are used to check concentricity on bench or machine. Dial Indicators not included.



ECE-300 series

ECE-330 series

ECE-340

Part No.	Description	Arm Length	Base Dim. Lmm x Wmm x H	Holding Power	Price	Sale Price
ECE-300ALL	Precision hydraulic arm, gold	23 1/2"	4 3/4"mm x 2"mm x 2 1/8"	352 lbs.	\$680.00	<b>\$540.00</b>
ECE-300AL	Precision hydraulic arm, gold	16 3/4"	3 1/8"mm x 2"mm x 2 1/8"	220 lbs.	\$315.00	<b>\$250.00</b>
ECE-300B	Precision hydraulic arm, gold	13 3/8"	2 3/8"mm x 2"mm x 2 1/8"	176 lbs.	\$220.00	<b>\$175.00</b>
ECE-330AL	Precision mechanical arm, red	16 3/4"	3 1/8"mm x 2"mm x 2 1/8"	220 lbs.	\$330.00	<b>\$260.00</b>
ECE-330B	Precision mechanical arm, red	13 3/8"	2 3/8" x 2" x 2 1/8"	176 lbs.	\$235.00	<b>\$185.00</b>
ECE-340	Standard mechanical arm, red	13 3/8"	2 3/8" x 2" x 2 1/8"	176 lbs.	\$105.00	<b>\$85.00</b>