

Starrett®

PROMO 2015.2

PRECISION HAND TOOL PROMOTION



METROLOGY SOLUTIONS

124 INSIDE MICROMETERS

- Insulated rods marked with length
- Adjustable for length
- 6-1/2" (165mm) long handle is available
- Measuring rods are solid
- Graduations: .001"



124AZ

Cat. No.	EDP	Range	Screw Movement	Measuring Rods	Spacing Collars	Sale Price
124AZ	50542	2-8"	1/2"	6	One 1/2"	240.35
124BZ	50546	2-12"	1/2"	10	One 1/2"	293.55
124CZ	50550	8-32"	1"	4	One 1"; Two 2"	532.95
124DZ	50554	2-32"	1/2" and 1" (2 heads)	Set 124A and 124C		757.15

430 INDICATING MICROMETER

- Retractable, quick release anvil for uniform, consistent, and fast measurement
- Insulated frame to prevent thermal expansion/contraction
- Balanced frame and thimble design for ease of use
- Carbide measuring finish on anvils
- Plain thimble
- Satin chrome finish for rust and glare resistance
- Spindle lock
- Supplied with custom wooden case



NEW!

Cat. No.	EDP	Range Micrometer	Indicator	Resolution Micrometer	Indicator	Sale Price
430XLZ-1	72533	0-1"	±.0020"	.0001"	.00005"	759.05

T444 OUTSIDE MICROMETERS

- No-glare satin chrome finish which resists rust
- Advanced sleeve design with staggered lines and distinct figures for precise and easy readability
- Balanced frame and thimble design to ensure easy handling and better readability
- Insulated frame for prevention of temperature related expansion and contraction
- Provides quick and easy adjustment
- Reading in ten-thousandths of an inch (.0001") with a vernier scale on the sleeve



T444.1XRL-3

Cat. No.	EDP	Range	Graduations	Sale Price
T444.1XRL-1	52083	0-1"	.0001"	98.80
T444.1XRL-2	52084	1-2"	.0001"	115.90
T444.1XRL-3	52085	2-3"	.0001"	128.25
T444.1XRL-4	52086	3-4"	.0001"	148.20
T444.1XRL-5	52087	4-5"	.0001"	160.55
T444.1XRL-6	52088	5-6"	.0001"	178.60

445 DEPTH MICROMETERS

- Depths of holes, slots, shoulders and projections can be measured to .001" (0.01mm)
- Furnished with choices of 3" (75mm), 4" (100mm), and 6" bases and have 5/32" (4mm) diameter measuring rods
- Combination ratchet and speeder for uniform pressure and quicker adjustment
- Ring-type lock nut for quick and sure locking



445AZ-6RL

Cat. No.	EDP	Range	Sale Price
445AZ-3RL	52208	0-3"	235.60
445AZ-6RL	52212	0-6"	284.05
445AZ-9RL	52216	0-9"	351.50
445AZ-12RL	67117	0-12"	472.15
445BZ-3RL	52220	0-3"	252.70
445BZ-6RL	52224	0-6"	297.35
445BZ-9RL	52228	0-9"	370.50
445DZ-3RL	52244	0-3"	293.55
445DZ-12RL	67119	0-12"	532.95

463 MICROMETER HEADS

- Reading surfaces are satin finished stainless steel
- Ring-type knurled lock nut for quick and sure locking
- Combination ratchet and speeder for uniform pressure and quicker adjustment, or plain micrometer heads that depend on your own feel
- Includes lock nut plain thimble ratchet and lock nut



463P

Cat. No.	EDP	Range	Graduation	Sale Price
463P	52440	0-1/2"	.001"	76.00
463L	52442	0-1/2"	.001"	82.65
463RL	52443	0-1/2"	.001"	88.35

486 BLADE TYPE MICROMETER

- The blades are .030" (0.8mm) thick
- Blades will measure to 5/16" (8mm) depths
- Balanced frame and thimble design ensure easy handling and better readability
- Speeder for quicker adjustment on all sizes



Cat. No.	EDP	Range	Sale Price
486P-1	52499	0-1"	385.70

714 ELECTRONIC INTERCHANGEABLE ANVIL OUTSIDE MICROMETER

- Large, right-sized, high-contrast LCD digital readout is easy to read and reduces errors
- Conventional inch or millimeter graduations standard
- Starrett no-glare satin chrome finish on thimble and sleeve
- Has output capability



Cat. No.	EDP	Range in	Approx. mm	Resolution in	mm	Sale Price
714BFLZ	64429	6-9	152-228	.0001	0.001	1,198.90



733 ELECTRONIC MICROMETERS

with output

- Balanced frame design for comfortable and accurate measuring
- SPC output
- Large, easy-to-read, high-contrast LCD digital readout
- Hard and stable one-piece friction thimble permits one-hand operation of micrometer and uniform contact pressure
- Inch/millimeter metric conversion
- Ring-type knurled lock nut for quick and sure locking
- Micro-lapped carbide measuring faces



733XFL-1

Cat. No.	EDP	Range in	Approx. mm	Resolution in	mm	Sale Price
733XFL-1	64239	0-1	0-25.4	.00005	0.001	304.00
733XFLZ-2	64241	1-2	25.4-50.8	.00005	0.001	360.05
733XFLZ-3	64242	2-3	50.8-76	.00005	0.001	440.80
733XFLZ-4	64243	3-4	76-101	.00005	0.001	475.00
733XFLZ-5	64244	4-5	101-127	.0001	0.001	548.15
733XFLZ-6	64245	5-6	127-152	.0001	0.001	568.10

3732 ELECTRONIC MICROMETERS

without output

- Balanced frame design for comfortable and accurate measuring
- Large, easy-to-read, high-contrast LCD digital readout
- No-glare black wrinkle finish on frame
- Hard and stable one-piece friction thimble permits one-hand operation of micrometer and uniform contact pressure



3732XFL-1

Cat. No.	EDP	Range	Resolution	Accuracy	Sale Price
3732XFL-1	12268	0-1"	0.00005"	± 0.0001"	129.20
3732XFL-2	12269	1-2"	0.00005"	± 0.0001"	174.80
3732XFL-3	12270	2-3"	0.00005"	± 0.0001"	223.25
3732XFL-4	12271	3-4"	0.00005"	± 0.00015"	248.90

3206 OUTSIDE MICROMETER STAND

- Converts outside micrometers to a sturdy bench gage for batch inspection of small parts
- Useful as a handy bench vise or assembly fixture
- Gripping surfaces are two nylon pads which are replaceable
- Ball joint construction allows head to be positioned as much as 30° off perpendicular in any direction
- Positive lock on the base
- Base dimension is 6-3/8" long x 3-1/2" wide x 3/4" thick (162mm long x 89mm wide x 19mm thick)
- Tilting head clamping capability is 3/4" (19mm) thick x 1" (25mm) throat depth
- Accommodates all Starrett 1/2" (13mm) and 1" (25mm) outside micrometers, 2 and 2A 2" outside micrometers and 210, 220, 483, 485, 569 special purpose outside micrometers



Cat. No.	EDP	Description	Sale Price
3206	68917	Outside micrometer stand	98.80

125 VERNIER CALIPERS

- High quality, basic vernier caliper that offers inch and metric measurement
- Lock screw for sliding jaw
- Hardened stainless steel depth rod
- Sharp, black graduations on the satin finished bar

**125MEA-6/150**

Cat. No.	EDP	Range in	mm	Sale Price
125MEA-6/150	61660	0-6	0-150	97.85
125MEA-8/200	61882	0-8	0-200	114.95
125MEA-12/300	61886	0-12	0-300	206.15

798 ELECTRONIC CALIPERS

- IP67 level of protection against coolant, dirt and dust
- With and without output
- Fine adjustment
- Hardened stainless steel measuring surfaces
- Large, easy-to-read, high contrast LCD digital readout

**798A-6/150**

Cat. No.	EDP	Range	Resolution	Output	Sale Price
798A-6/150	20798	6"	.0005"		194.75
798A-8/200	20799	8"	.0005"		247.95
798A-12/300	20800	12"	.0005"		368.60
798B-6/150	12521	6"	.0005"	x	233.70
798B-8/200	12523	8"	.0005"	x	283.10
798B-12/300	12525	12"	.0005"	x	420.85
798BX-6/150	12782	0-6"	.0005"	x	328.70

EC799 ELECTRONIC CALIPERS

- Lightweight, ergonomic design
- Inch/millimeter conversion reads .0005" or 0.01mm
- Easy access to the single, long-life battery
- Last measuring position retained when shut off
- Hardened stainless steel body for long life
- Fine adjustment thumb wheel
- Lock screw to hold the slide in position
- Resolution is .0005" (0.01mm)
- Zero at any position

**EC799A-6/150****NEW!**

Cat. No.	EDP	Range	Output	Sale Price
EC799A-6/150	00142	0-6"		148.20
EC799A-8/200	00145	0-8"		209.00
EC799A-12/300	00148	0-12"		312.55
EC799B-6/150	00143	0-6"	x	190.95
EC799B-8/200	00146	0-8"	x	252.70
EC799B-12/300	00149	0-12"	x	357.72

799 ELECTRONIC CALIPERS***without output***

- Lightweight, ergonomic design
- Last measuring position retained when shut off
- Large, easy-to-read, high-contrast LCD digital readout
- Inch/millimeter conversion reads .0005" or 0.01mm

**799AZ-24/600**

Cat. No.	EDP	Range	Resolution	Sale Price
799AZ-24/600	11978	0-24"	.0005"	704.90
799AZ-40/1000	11979	0-40"	.0005"	1,413.60

3202 SLIDE CALIPERS

- Provides quick, accurate measurement of O.D. and depth
- Sharp, clear dial graduations
- Sharp, black graduations on satin finished bar
- Hardened stainless steel
- Lock screws for sliding jaw and dial bezel

**3202-6**

Cat. No.	EDP	Range	Graduation	Sale Price
3202-6	61467	0-6"	.001"	95.95
3202-8	61468	0-8"	.001"	135.85
3202-12	61466	0-12"	.001"	197.60

NEW!

3753A ELECTRONIC DEPTH GAGES***without output***

- Clear, easily-read number, properly sized for the tool
- Hardened stainless steel body and slide for long life
- Fine adjustment thumb roll for precision measurements
- Lock to hold the slide in position

**3753A-6/150**

Cat. No.	EDP	Range	Resolution	Accuracy	Sale Price
3753A-6/150	12258	0-6"	.0005"	±.001"	267.90
3753A-8/200	12259	0-8"	.0005"	±.001"	279.30
3753A-12/300	12260	0-12"	.0005"	±.001"	338.20

3753B ELECTRONIC DEPTH GAGE***with output*****NEW!**

- Hardened, stainless steel bar for long life
- Removable hook attachment for measurements from the edge of a work piece to the inside or outside edge of slots, grooves, etc.
- Lock to hold the slide in position
- Fine adjustment thumb roll for precision measurements
- Large, easy to read LCD, .310" character height
- Induction type linear encoder system
- Patented non-contact RS-232 data output
- CR2032 3-volt battery (>1 year battery life under normal use)
- Inch/mm conversion
- Zero at any position



Cat. No.	EDP	Range	Description	Sale Price
3753B-6/150	12690	0-6"	Depth gage in case	333.45

81 DIAL INDICATORS

- Shockless, hardened steel gear train and jewel bearings
- Furnished with a lug-on-center back
- Anti-magnetic and special non-shock mechanisms are options available for all models

**81-111J**

Cat. No.	EDP	Grad.	Range One Rev.	Total	Dial Reading	Sale Price
81-111J	53378	.0001"	.010"	.025"	0-5-0	230.85
81-136J	53392	.0005"	.030"	.075"	0-15-0	157.70
81-131J	53388	.0005"	.050"	.125"	0-25-0	140.60
81-141J	53400	.001"	.100"	.250"	0-50-0	140.60

196 UNIVERSAL BACK PLUNGER DIAL INDICATORS

- One of the most versatile indicators available
- Accurate and reliable
- Simple to operate
- Range: .200" (5mm)
- Graduations: .001" (0.02mm)

**196A1Z**

Cat. No.	EDP	Reading	Sale Price
196A1Z	50697	0-100	229.90
196A6Z	50701	0-100	267.90
196A5Z	50714	0-50-0	229.90

1175Z DIAL INDICATOR GROOVE GAGE

- The reference jaw can be mounted in two positions on the range adjusting bar
- Adjustable bar for greater or lesser range
- A fine adjustment screw and a lock provided
- Two sets of jaws, both readily interchangeable
- Three sets of contacts (Styles 1-10, 2-10, 2-20)
- Contacts can be attached to the jaws without replacing the jaw
- Contact ends are flush for blind hole gaging
- Hardened steel contacts with hard chrome finish



Cat. No.	EDP	Range	Graduation	Sale Price
1175Z	53173	.375"-6"	.0005"	1,885.75

3600 ELECTRONIC INDICATORS

- Long battery life
- Plastic storage case with clear cover
- Large, easy-to-read LCD
- Zero setting at any position
- Reverse travel (control indicates direction)
- Dust cap

**3600-5**

Cat. No.	EDP	Range in mm	Resolution in mm	Accuracy (±) in mm	Sale Price
3600-5	68813	0.5 12.7	.0005 0.01	0.001 0.03	159.60
3600M-5	68918	12.7	0.01	0.03	159.60

657AA MAGNETIC BASE

- For use with all Starrett test, Back-Plunger, AGD, Dial and Miniature Dial Indicators
- Accommodates similar indicators of other manufacturers
- Includes magnetic base with attachments: upright base post, two snugs, rod and indicator attachment



Cat. No.	EDP	Description	Sale Price
657AA	52743	Magnetic base with all attachments	176.70

660 MAGNETIC BASE

- Compact and versatile, with three adjustable pivots controlled by a single knob for fast, easy indicator positioning



Cat. No.	EDP	Description	Sale Price
660	68621	Base indicator holder	114.95

3670 DIAL INDICATOR STANDS**NEW!**

- Designed for comparison measurements using a dial indicator or digital indicator
- Vertical fine adjustment is standard on all models
- Rugged bracket holds indicator firmly in place
- Can be used with any AGD dial or digital indicator
- Furnished with a serrated or flat anvil which is ground and lapped and removable

**3671**

Indicator not included

Cat. No.	EDP	Description	Sale Price
3671	69901	Stand with round flat anvil	484.50
3672	69902	Stand with round serrated anvil	484.50
3673	69903	Stand with square serrated anvil	484.50



TALYPROFILE

ADVANCED SURFACE FINISH ANALYSIS

TalyProfile is a dedicated PC based software package designed for use with the SR300 and SR400 series instruments. Three versions are available. TalyProfile "Lite" has all functions typically used for a shopfloor inspection, TalyProfile "Silver" has enhanced features for R&W parameters, a statistics module and full report printing and TalyProfile "Gold" has complete laboratory analysis functions:

- Outstanding graphics
- Advanced time-saving analysis templates
- Desktop publishing facility
- In depth analysis
- Full compatibility

TalyProfile parameters

Roughness parameters obtained by filtering: Ra, Rq, Rt, Rp, Ry, Rku, Rsk, RSm, Rz, RΔq, RTp, RHTp, Rlo, RΔq, RPC, RzJIS, R3z.

Parameters on the raw profile (unfiltered): Pa, Pq, Pt, Pp, Pv, Pku, Psk, PSm, Pz, PΔq, PΔq, PTp, PHTp, PLo, PPc.

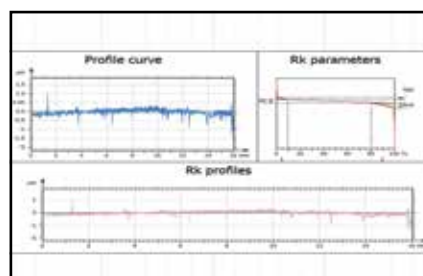
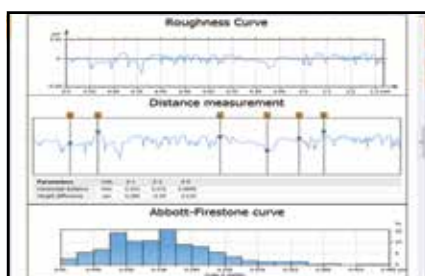
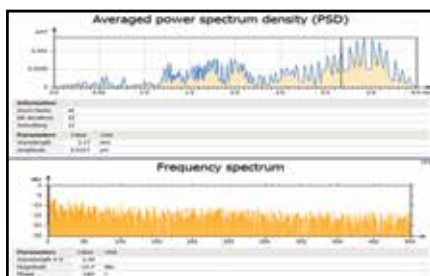
Parameters obtained by double filtering (DIN 4776): Rk, Rpk, Rvk, MR1, MR2, A1, A2, Rpk, Rvk

Parameters obtained by the motifs method ("R&W")*: R, AR, Pt, Rx, SR, SAR, Nr, Kr, W, AW, Wte, Wx, SW, SAW, Nw, Kw, Rke, Rpk, Rvke, Trc, HTrc.

*Only with gold or silver versions

Talyprofile	Lite	Silver	Gold
Surtronic S-series acquisition	X	X	X
Desktop publishing templates	X	X	X
Multi-language support	X	X	X
EN, FR, DE, ES, IT, PL, CN, KR	X	X	X
Levelling	X	X	X
Symmetries	X	X	X
Zoom	X	X	X
ISO 4287	X	X	X
Material Ratio Curve	X	X	X
Area of a hole/peak	X	X	X
Profile parameters and curves	X	X	X
Roughness and waviness curves	X	X	X
Distance measurement	X	X	X
Multiple file format reports		X	X
Report printing		X	X
Form Talysurf data import		X	X
Tolerance limits (pass/fail)		X	X
Data file explorer		X	X
ISO 13565 Automotive		X	X
Interactive Mr curve		X	X
Step height measurement		X	X
Form removal			X
Filtering by FFT			X
Thresholding			X
Frequency spectrum			X
Power spectrum density			X
Retouch profile point			X
Rk parameters			X
Rk Parameters curves			X
ISO 12085 R&W motifs			X

PC specification	Minimum	Recommended
Operating system	Windows XP	Windows 8
Memory (RAM)	1GB	3 GB
CPU speed	1GHz	2 GHz
Screen resolution	1024 x 768	1920 x 1080
USB port	1.1	2.0



SURFACE ROUGHNESS TESTERS

ROUGHNESS STANDARDS

ASME 46.1, ISO4287, ISO13565-1/2,
JIS 0601, N331007

ROUGHNESS PARAMETERS

Ra, Rv, Rp, Rz, Rt, Rsk, Rmr, Rk, Rq

APPLICATIONS

- Incoming inspections
- Final inspection before shipment
- Process control on the production line
- Checking large components or structures

SURFACE ROUGHNESS TESTING

Starrett surface roughness testing equipment is simple, accurate and of high quality. It performs the complex analysis required to meet or exceed your customers specifications. The SR100, SR160, SR300, and SR400 units are tough, shock tested, and capable of withstanding the demands of a shop environment. Our surface roughness testers meet the increasing requirements across industries like safety, aerospace, automotive, precision bearings, and general manufacturing.

When our customers speak, we listen. And that is why the new Starrett SR160 is one of our most well developed tools yet. Regardless of your application, an investment in a Starrett surface roughness tester will give you the peace of mind that your shop deserves.

SR100*

EDP 20950

The SR100 Surface Roughness Tester is powerful, accurate and easy to use. It is ideal for checking large components, structures, auditing batch prior to shipment and production line process control.

PRICE \$1,550.40

** Discontinued product; offer valid while supplies last*



SR160

EDP 72584

The SR160 has an on-screen color graph display with instant results of multiple parameters. Two-piece Bluetooth connectivity.

PRICE \$1,852.50



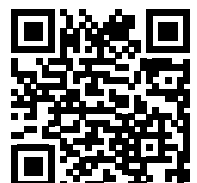
SR300/SR400

EDP 21000/EDP 21001

The SR300 and SR400 Surface Roughness Testers are a full-featured, powerful and versatile surface roughness tester. It can be used either freestanding or bench mounted with fixturing for batch measurement and laboratory applications.

SR300 PRICE \$2,845.25

SR400 PRICE \$3,610.00



78 BORES GAGES

- Wide measurement range without changing anvils
- Tungsten carbide measuring faces
- Ratchet stop
- Self-centering contacts
- Blind bore measuring capability
- Extensions available up to 6" (150mm)
- Setting rings included
- Furnished in a case, complete with setting ring, contacts, wrenches, and instructions

**78XTZ-100**

Cat. No.	EDP	Range	Accuracy	Approx. Measuring Depth	Sale Price
78XTZ-100	68124	.080-.100"	.00010"	3/8"	1,661.55
78XTZ-200	68127	.160-.200"	.00010"	3/4"	1,486.75
78XTZ-250	68128	.200-.250"	.00010"	3/4"	1,486.75
78XTZ-312	68129	1/4-5/16"	.00015"	2-1/4"	693.50
78XTZ-375	68130	5/16-3/8"	.00015"	2-1/4"	653.60
78XTZ-1	68134	3/4-1"	.00015"	2-5/8"	720.10
78XTZ-138	67674	1-1-3/8"	.00015"	2-5/8"	997.50
78XTZ-2	67675	1-3/8-2"	.00015"	3-1/16"	1,018.40
78XTZ-258	67676	2-2-5/8"	.00020"	3-1/16"	1,251.15
78XTZ-6	67680	5-6"	.00025"	4-1/2"	1,895.25
78XTZ-7	67681	6-7"	.00030"	4-1/2"	2,375.95
78XTZ-8	67682	7-8"	.00030"	4-1/2"	3,688.85
78XTZ-9	67857	8-9"	.00030"	4-1/2"	3,751.55
78MXTZ-25	68150	20-25mm	0.004mm	66mm	739.10
78MXTZ-50	67862	35-50mm	0.004mm	80mm	1,071.60
78MXTZ-65	67863	50-65mm	0.005mm	80mm	1,282.50
78MXTZ-125	67865	100-125mm	0.006mm	115mm	1,638.75
78MXTZ-175	67867	150-175mm	0.007mm	115mm	2,436.75

82 DIAL BORE GAGES

- These gages are also available with electronic indicators by special order
- Useful for controlling approach to tolerance without removing the workpiece from a machine
- Sets furnished in attractive, protective case
- Each set consists of a dial indicator, a body and actuating rod, two adjusting wrenches and probes
- Grads.: .0001"

**82AZ**

Cat. No.	EDP	Total Range	Sale Price
82AZ	55791	.107-.266"	1,080.15
82BZ	55792	.217-.594"	1,246.40
82CZ	55793	.560-1.565"	1,479.15

3089 DIAL BORE GAGES

- All anvils laser marked for easy selection
- Gage chart for quick and easy anvil selection
- Includes sturdy aluminum case with cut outs for gage and all accessories
- Ergonomic design with non-slip insulating grip
- Resolution: .0005"

**3089Z-131-715J**

Cat. No.	EDP	Range	Sale Price
3089Z-131-715J	12456	0.7"-1.5"	223.25
3089Z-131-1424J	12457	1.4"-2.4"	223.25
3089Z-131-26J	12458	2"-6"	248.90

780 ELECTRONIC BORE GAGES

- Wide measurement range without changing anvils
- Carbide measuring faces on sizes 1/2" (12.5mm) diameter
- Extension available for deep holes
- Precision ratchet stop provides correct contact pressure for accurate readings
- Resolution: .00005" (0.001mm)
- Large high-contrast LCD digital readout is easy to read and reduces error

**780XTZ-200**

Cat. No.	EDP	Range	Sale Price
with output			
S780XTBZ	12043	.080-.250"	6,423.90
S780XTCZ	12044	1/4-3/8"	2,562.15
S780XTDZ	12045	3/8-3/4"	3,096.05
S780XTEZ	12046	3/4-2"	4,056.50
S780XTFZ	12047	2-4"	4,635.05
S780XTKZ	12049	4-6"	3,984.30
S780XTGZ	12048	4-8"	8,313.45
without output			
780XTZ-200	12019	.160-200"	2,679.00
780XTZ-250	12020	.200-.250"	2,679.00
780XTZ-312	12021	1/4-5/16"	1,848.70
780XTZ-375	12022	5/16-3/8"	1,855.35
780XTZ-500	12024	3/8-1/2"	1,828.75
780XTZ-625	12025	1/2-5/8"	1,849.65
780XTZ-750	12026	5/8-3/4"	1,896.20
780XTZ-1	12027	3/4-1"	2,220.15
780XTZ-138	12028	1-1-3/8"	2,622.00
780XTZ-2	12029	1-3/8-2"	2,590.65
780XTZ-258	12030	2-2-5/8"	2,955.45
780XTZ-314	12032	2-5/8-3-1/4"	2,879.45
780XTZ-4	12033	3-1/4-4"	3,201.50
780XTZ-5	12034	4-5"	3,334.50
780XTZ-6	12035	5-6"	3,444.70
780XTZ-7	12036	6-7"	3,756.30
780XTZ-8	12037	7-8"	4,000.45
780XTZ-9	12038	8-9"	4,847.85
780XTZ-10	12039	9-10"	5,341.85

S766A BASIC ELECTRONIC TOOL SET

- Basic starter sets for electronic measuring
- Includes slide calipers and 1"/25mm micrometers
- Attractive, protective case



Cat. No.	EDP	Description	Sale Price
S766AZ	12206	Electronic tool set without output including - EC799A-6/150 electronic slide caliper and 3732XFL-1 electronic outside micrometer	317.30

DATASURE® WIRELESS DATA COLLECTION**DataSure Facts**

DataSure Wireless Data Collection consists of three primary components:

- Miniature radios (End Nodes) attached to the data output port of an electronic tool
- A Gateway that connects to a PC
- Routers to extend the system's range and make the network more robust

A Comprehensive, Robust Solution

- Works in almost any environment
- Maintains data integrity in electronically noisy shops
- Data receipt confirmation signal
- DataSure stores several readings
- DataSure adapts to all major electronic measuring tools
- "IT" friendly and easily installs on a standard PC



Cat. No.	EDP	Description	Sale Price
1500-2-N	12059	Router, 916MHz, 120/240 VAC	933.85
1500-3A-1N	12530	End Node, Starrett Opto	570.95
1500-3A-2N	12531	End Node, Starrett IP67 Micrometer	570.95
1500-3A-3N	12532	End Node, Starrett 3rd Generation	570.95
1500-3A-4N	12533	End Node, Starrett 2700 Indicators	570.95
1500-3A-5N	12534	End Node, Starrett Cat. No. 2000	570.95
1500-3A-6N	12535	End Node, Mitutoyo 6-Pin	603.25
1500-3A-7N	12536	End Node, Mitutoyo without absolute encoder	592.80
1500-3A-8N	12537	End Node, RS232, Jumpered Port Pins	570.95
1500-3A-9N	12538	End Node, Mitutoyo IP66 Micrometer	624.15
1500-3A-10N	12539	End Node, Mitutoyo IP65 Micrometer	624.15
1500-3A-11N	12540	End Node, Marposs E4N	570.95
1500-3A-12N	12541	End Node, Universal 10-pin connector	570.95
1500-3A-13N	12542	End Node, Absolute Digimatic Indicator	595.65
1500-3A-14N	12543	End Node, Mahr-Federal with µMaxum and XL	570.95
1500-3A-15N	12544	End Node, Opto/Duplex	570.95
1500-3A-16N	12545	End Node, Mahr-Federal EX	570.95
1500-3A-18N	12565	End Node, Starrett 798 Calipers	570.95
1500-3A-21N	00046	End Node, Starrett 2900	570.95



SR160 SURFACE ROUGHNESS TESTER**NEW!**

- Bluetooth Technology - Quick, reliable communication between traverse and display/control unit
- Tactile measurement button great for challenging orientations
- Detailed graph of measurement area
- Charge and transfer data through PC connection, main charger and standard USB charger included
- Most advanced rechargeable battery technology for unrivaled reliability and battery life. Will perform over 2,000 measurements from a single charge



Cat. No.	EDP	Sale Price
SR160	72584	1,852.50

3805B ELECTRONIC DUROMETER

- Meets ASTM standards for durometer hardness
- Simple 3-button control
- Auto-Hold feature
- Custom carrying case
- Resolution: 0.5H
- Deviation: <1% H
- Accurate and repetitive deviation - 20~90HSA



Cat. No.	EDP	Range	Sale Price
3805B	69882	0-100 HSA	221.35

3810A DIGITAL PORTABLE HARDNESS TESTER**NEW!**

- Combines fast test speeds coupled with ample memory and output
- Performs tests that easily convert to most popular hardness scales such as Rockwell, Brinell, Vickers and Shore
- Designed to test the hardness of large, hard metal parts
- USB output
- Automatic conversions to Rockwell Brinell, Vicker and Shore
- Automatic mean value as well as Min and Max values



Cat. No.	EDP	Sale Price
3810A	69871	2,101.40

3811A COMPACT HARDNESS TESTER

- Combines fast test speeds coupled with ample memory and output
- Performs tests that easily convert to most popular hardness scales such as Rockwell, Brinell, Vickers and Shore
- Designed to test the hardness of large, hard metal parts
- USB output
- Automatic conversions to Rockwell Brinell, Vicker and Shore
- Automatic mean value as well as Min and Max values



Cat. No.	EDP	Sale Price
3811A	69881	1,773.65

3812 ULTRASONIC THICKNESS GAGE

- Menu-driven, multi-functional tester with basic measurement capabilities
- Measures the thickness of metallic and non-metallic materials such as aluminum, titanium, plastics, ceramics and glass
- Accurately display readings in inch or millimeter
- Ideal for measuring a wall thickness that would be difficult to gage with conventional hand tools



Cat. No.	EDP	Sale Price
3812	67668	1,116.25

3814 ANALOG BENCH HARDNESS TESTER

- Ability to handle Rockwell Scales A through H and K
- Stable cast iron construction
- Ideal basic hardness testing for many typical applications



Cat. No.	EDP	Sale Price
3814	67754	2,653.35

C305R PRECISION RULES

- Quick-Reading 10ths, 32nds, 64ths
- Aircraft Quick-Reading 100ths
- Satin chrome finish
- Rules with single row of inch figures (all rules under 1" width)

C305R-6



Cat. No.	EDP	Description	Sale Price
C305R-6	51347	6" full-flexible steel	22.33
C305R-12	51348	12" full-flexible steel	45.60
C305R-18	51349	18" full-flexible steel	70.30
C305R-24	51350	24" full-flexible steel	100.70

3020 TOOLMAKERS' SQUARE

- This high quality toolmakers' square is not graduated and offers squareness accuracy to .0002" (0.05mm) for every 6"
- They feature hardened, ground and lapped stainless steel construction on both blade and beam
- Fitted case

3020-3



Cat. No.	EDP	Size - Length of Blade*		Length of Beam		Sale Price
		in	mm	in	mm	
3020-3	12225	2-31/32	75	1-31/32	50	70.30
3020-4	12226	3-31/32	100	2-31/32	75	88.35
3020-6	12227	5-29/32	150	3-29/32	100	129.20
3020-12	12228	12-1/32	300	6-7/8	175	265.05

* Length of blade from the inner edge of the beam to the end of the blade.

79 "YANKEE" SPRING-TYPE CALIPERS

- Made from a high steel and well finished
- The bow spring, although flexible, is exceedingly strong to assure reliability
- All sizes are available with either spring nut or solid nut
- The quick-adjusting automatic-closing spring nut is designed for making fast, positive adjustments



79B-8

Cat. No.	EDP	Size and Approx. Capacity		Sale Price
		in	mm	
79B-8	50369	8	200	77.90
79B-12	50373	12	300	82.65

26 FIRM-JOINT CALIPERS

- Tension will not change with leg movement
- Legs are made from a high-grade steel are ruggedly constructed and well furnished
- Improved joint designed for tension adjustment



26-6

Cat. No.	EDP	Size*		Sale Price
		in	mm	
26-6	50186	6	150	43.70
26-12	50189	12	300	68.40
26-18	50190	18	450	110.20
26-24	50191	24	600	157.70
26-36	50192	36	900	306.85

*Actual capacity is on-third greater than the listed size.

829 SMALL HOLE GAGE

- Hardened-ball measuring surface with two-point contact
- Smooth, sensitive adjustment for better feel, giving more accurate measurements
- The adjustment of the gage beyond their range



Cat. No.	EDP	Description	Sale Price
S829EZ	53074	Set of 4 in case	154.85



185 TIME SAVER® TAP AND DRILL GAGE

- Correct sizing of tap drill for any common size machine screw in "NF" National Fine or "NC" National Coarse Thread Series
- Leaves the right amount of stock for approximately 65% full thread
- Shows correct drill body size
- 60 holes with number sizes and decimal equivalents
- Hardened tool steel construction



Cat. No.	EDP	Sale Price
185	50675	65.55

472 SCREW PITCH GAGE

- Consists of a substantial steel with a number of folding leaves at both ends, each leaf having teeth corresponding to a definite pitch, marked on each leaf
- Locking device at both ends of the case, so leaves can be securely locked in position for use
- Leaves have a special narrow design, permitting checking internal threads in nuts, etc., as well as external



Cat. No.	EDP	Description	Sale Price
472	52484	With locking device and 11-1/2 and 27 pipe thread pitches	74.10

473 SCREW PITCH GAGE

- Consists of a substantial steel case with a number of folding leaves at both ends, each leaf having teeth corresponding to a definite pitch, marked on each leaf
- Positive stop design at both ends of the case in position for use
- Leaves have a special narrow design, permitting checking internal threads in nuts, etc., as well as external threads



Cat. No.	EDP	Description	Sale Price
473	52485	With positive stop and 11-1/2 and 27 pipe thread pitches	43.70

476 SCREW PITCH GAGE

- Consists of a substantial steel case with a number of folding leaves at both ends, each leaf having teeth corresponding to a definite pitch, marked on each leaf
- Positive stop design at both ends of the case in position for use
- Leaves have a special narrow design, permitting checking internal threads in nuts, etc., as well as external threads



Cat. No.	EDP	Description	Sale Price
476	52488	With positive stop	46.55

188 ENGLISH STANDARD WIRE GAGE

Birmingham or Stubs' Iron Wire Gage

- Popular for gaging iron wire, hot and cold rolled sheet steel and sheet iron
- Gage has convenient decimal equivalents of each number on the reverse side
- Satin finish
- Carefully tested after hardening



Cat. No.	EDP	Sale Price
188	50678	76.95

666 THICKNESS GAGE "FEELER STOCK" IN ROLLS

- In a compact, sturdy plastic rewindable dispenser case. This case handles stock up to .015" and 0.35mm only.
- Roll stock in thickness of .016" or 0.40mm and over is furnished in 20' or 6m (non-dispensable) rolls in cardboard box
- Housed in convenient, rewindable dispenser rolls
- Handy 25' and 7.6m rolls 1/2" and 12.7mm wide



666-2

Cat. No.	EDP	Thickness	Sale Price
666-2	52798	.002"	49.40
666-2 1/2	52799	.0025"	52.25
666-3	52800	.003"	52.25
666-4	52801	.004"	36.10
666-5	52802	.005"	36.10
666-6	52803	.006"	36.10
666-7	52804	.007"	36.10
666-8	52805	.008"	36.10
666-9	52806	.009"	32.78
666-11	52808	.011"	32.78
666-12	52809	.012"	32.78
666-13	52810	.013"	32.78
666-14	52811	.014"	32.78
666-15	52812	.015"	32.78
666-16	52813	.016"	32.78
666-17	52814	.017"	32.78
666-18	52815	.018"	32.78
666-19	52816	.019"	32.78
666-20	52817	.020"	32.78
666-21	52818	.021"	32.78
666-22	52819	.022"	32.78
666-23	52820	.023"	38.95
666-24	52821	.024"	38.00
666-25	52822	.025"	37.53

117 CENTER PUNCHES WITH ROUND SHANKS

- Hardened and properly tempered
- Well proportioned
- Knurled finger grip
- Ground at the proper angle
- Accurately centered tips
- 90° included angle



Cat. No.	EDP	Description	Sale Price
S117PC	50488	Set of 5 - 117AA, A, B, C, D in plastic case	36.10

248 DRIVE PIN PUNCHES FOR MACHINE SHOP AND MOTOR SERVICE WORK

- Extra-long drive pin punches, measuring 8" (200mm). The bodies are 4-1/2" (115mm) and the drive pin sections are 3-1/2" (90mm) long.
- Well-proportioned, hardened, properly tempered with a knurled grip
- Designed to withstand hard use
- Provide a most satisfactory punch for machine shop and other motor service work
- Diameter of punches is slightly less than listed



Cat. No.	EDP	Description	Sale Price
SB248Z	12464	Set of 4 brass punches (1 of each size) in fabric pouch	37.53

565 DRIVE PIN PUNCH

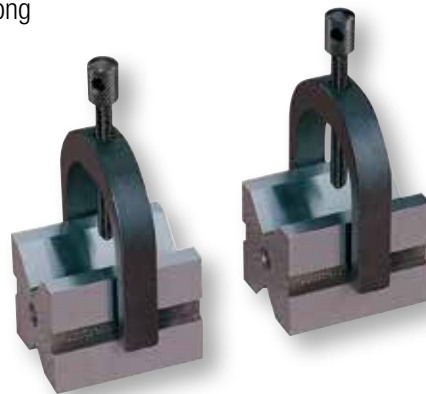
- Hardened and tempered steel
- Knurled grip
- Punch material available in hardened/tempered steel and brass
- Round and square shanks available
- Available tips include center, prick and drive pin
- Tip diameters range from 1/16" to 5/16"



Cat. No.	EDP	Length in	Length mm	Diameter in	Diameter mm	Sale Price
565A	52578	4	100	1/16	1.5	5.70
565B	52579	4	100	3/32	2.5	5.70
565C	52580	4	100	1/8	3	5.70
565D	52581	4	100	5/32	4	5.70
565E	52582	4	100	3/16	5	5.70
565F	52583	4	100	7/32	5.5	5.70
565G	52584	4	100	1/4	6	5.70
565H	52585	4	100	5/16	8	5.70

278 V-BLOCKS AND CLAMPS

- Precision ground to extreme accuracy
- Vees are central, parallel, and square with the ends and sides
- Hardened and ground steel construction
- Numbered in series so the vees in each set are always in alignment
- 1/4-20 tapped hole through the sides for attachment to an angle iron that can then be attached to a lathe faceplate or held by a magnetic chuck
- Each block is 1-1/4" (32mm) square and 1-5/8" (400mm) long



Cat. No.	EDP	Capacity in	Capacity mm	Sale Price
278	51312	1	25	269.80



PROMO 2015.2



THE L.S. STARRETT COMPANY - CORPORATE HEADQUARTERS

Phone: (978) 249-3551 | Fax: (978) 249-8495
121 Crescent Street - Athol, MA 01331 - USA