

Tel: 440-968-3228  
Fax: 440-968-3611  
1-800-445-1068

# Hemly

9700 Madison Rd  
Montville, OH  
44064

TOOL SUPPLY INC.

e-mail: sales@hemlytool.com • www.hemlytool.com

**2017 Fall/Winter Flyer**

Pricing valid from October 1 to January 31, 2018

## MACHINE VISE + PARALLEL SET



- Vises are matched
- An integral key and large fasteners reduce reflection
- Chip cover protects lead screw
- Moveable jaw does not lift off the bed
- Interchangeable soft jaws
- 6" Jaw Width
- 7.5" Jaw Opening
- Model GS675



327-275M  
Reg List \$630.60



- Thin style, 1/8" thick
- Matched pairs
- Made of high grade steel alloy
- Hardened and ground
- Tolerance  $\pm 0.0003"$
- Length: 6"
- Height:  
1/2, 5/8, 3/4, 7/8, 1,  
1-1/8, 1-1/4, 1-3/8,  
1-1/2, 1-5/8



230-863  
Reg List \$72.90

Code No.: 500-778

**\$531.84**



## DOUBLE CLAMP VISE WITH FREE ALUMINUM SOFT JAWS

- One handle simultaneously operates two moveable jaws and clamps 2 workpieces of same or different size or one large workpiece
- The moveable jaw ANTI-LIFT mechanism provides alignment to workpiece without jaw lift
- There are 6 kinds of clamping ways to meet workpieces of different shapes and sizes
- The whole body is precisely ground and height tolerance is within  $\pm 0.025\text{mm}$  ( $\pm 0.001"$ ), therefore several vises can be lined up for production
- The rigid construction prevents base distortion

Code: 382-600  
Reg List \$2,165.50

- Model TLD-60G/HV
- 6" jaw width
- 4.9" jaw openings



6" Aluminum Soft Jaws

Code: 382-602  
Reg List \$794.10

+



**FREE**

Code No.: 500-273

**\$1,775.76**



# PACKAGES

## CAT50 Package Plus Trolley



This is important information!

- 100% Forged Construction
- Certified balanced 25,000 rpm
- Precision Ground Throughout
- DIN Coolant thru the flange - standard
- Threaded through holes for a back-up screw (tool stop) or coolant through when removed
- TIR, 0.0003" at 4xDia.
- Wrench not included



Reg List \$3,042.80

**\$1,704.80**

### CAT 50 Package

Promo # 500-833

Code No.	Qty.	Description	
531-102	1 pc.	CAT50 3/8-4.00"	End Mill Holder
531-118	1 pc.	CAT50 1/2-2.63"	End Mill Holder
531-128	1 pc.	CAT50 5/8-3.00"	End Mill Holder
531-138	1 pc.	CAT50 3/4-3.00"	End Mill Holder
531-154	1 pc.	CAT50 1"-4.00"	End Mill Holder
531-234	1 pc.	CAT50 1-1/2-4.00"	Shell Mill Holder
531-218	1 pc.	CAT50 1"-4.00"	Shell Mill Holder
531-454	4 pcs.	CAT50 ER32-4.00"	Collet Chuck
326-995	1 pc.	4 trays = 20 inserts	Trolley

## CAT40 ER Collet Chuck Plus Trolley Packages



This is important information!

- CAT40 Certified Balanced to 30,000 rpm
- DIN Coolant option - standard
- All Ground Body
- 100% Forged Construction
- Factory Balanced to save spindle life, tool life and increase productivity
- Threaded through holes for a back-up screw (tool stop) or coolant through when removed
- TIR, 0.0003" at 4xDia.
- Wrench not included



**CAT40 PACKAGE**  
ER16 PLUS TROLLEY

**\$982.00**  
REG LIST \$1,854.30

### CAT 40 Package

Promo # 500-834

Code No.	Qty.	Description	
531-405	6 pcs.	CAT40-ER16-4"	Collet Chucks
337-440	1 pc.	ER16 1/16-3/8"x32nds	Collet Set
326-985	1 pc.	4 trays = 28 inserts	Trolley

**CAT40 PACKAGE**  
ER32 PLUS TROLLEY

**\$1,270.30**  
REG LIST \$2,020.90

### CAT 40 Package

Promo # 500-832

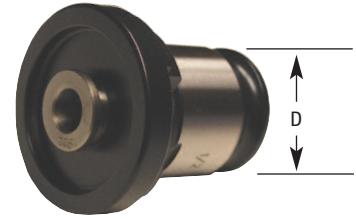
Code No.	Qty.	Description	
531-421	6 pcs.	CAT40-ER32-2.5"	Collet Chucks
337-444	1 pc.	ER32 1/8-3/4"x32nds	Collet Set
326-985	1 pc.	4 trays = 28 inserts	Trolley



# TAP COLLETS

## Positive Drive Tap Collets, Reducers & Sets

MADE IN ITALY 



### Tap System #1

- Tap Collets are fully compatible with Bilz System #1. Size Range: #0 - 9/16" hand tap and 1/8" pipe tap

### Tap System #2

- Tap Collets are fully compatible with Bilz System #2. Size Range: 5/16" - 7/8" hand tap and 1/4" - 1/2" pipe tap

### Tap System #3

- Tap Collets are fully compatible with Bilz System #3. Size Range: 13/16" - 1-3/8" hand tap and 3/4" - 1" pipe tap

Tap Size	Tap System	D	Tap Shank	Square	Code No.	SALE \$
#0-#6	1	.748	0.141	0.110	337-052	24.24
#8	1	.748	0.168	0.131	337-054	24.24
#10	1	.748	0.194	0.152	337-056	24.24
#12	1	.748	0.220	0.165	337-058	24.24
1/4	1	.748	0.255	0.191	337-060	24.24
5/16	1	.748	0.318	0.238	337-062	24.24
3/8	1	.748	0.381	0.286	337-064	24.24
7/16	1	.748	0.323	0.242	337-066	24.24
1/2	1	.748	0.367	0.275	337-068	24.24
9/16	1	.748	0.429	0.322	337-070	24.24
NPT 1/8P	1	.748	0.438	0.328	337-072	24.24
5/16	2	1.220	0.318	0.238	337-074	32.10
3/8	2	1.220	0.381	0.286	337-076	32.10
7/16	2	1.220	0.323	0.242	337-078	32.10
1/2	2	1.220	0.367	0.275	337-080	32.10
9/16	2	1.220	0.429	0.322	337-082	32.10
5/8	2	1.220	0.480	0.360	337-084	32.10
11/16	2	1.220	0.542	0.406	337-086	32.10
3/4	2	1.220	0.590	0.442	337-088	32.10
13/16	2	1.220	0.652	0.489	337-090	32.10
7/8	2	1.220	0.697	0.523	337-092	32.10
NPT 1/4P	2	1.220	0.562	0.421	337-094	32.10
3/8P	2	1.220	0.700	0.531	337-096	32.10
1/2P	2	1.220	0.687	0.515	337-098	32.10
3/8	3	1.891	0.381	0.286	337-111	70.32
1/2	3	1.891	0.367	0.275	337-089	70.32
9/16	3	1.891	0.429	0.322	337-091	70.32
5/8	3	1.891	0.480	0.360	337-093	70.32
11/16	3	1.891	0.542	0.406	337-095	70.32
3/4	3	1.891	0.590	0.442	337-097	70.32
13/16	3	1.891	0.652	0.489	337-100	70.32
7/8	3	1.891	0.697	0.523	337-102	70.32
15/16	3	1.891	0.760	0.570	337-104	70.32
1	3	1.891	0.800	0.600	337-106	70.32
1-1/8	3	1.891	0.896	0.672	337-108	70.32
1-1/4	3	1.891	1.021	0.766	337-110	70.32
1-3/8	3	1.891	1.108	0.831	337-112	70.32
NPT 1/2P	3	1.891	0.687	0.515	337-113	70.32
3/4P	3	1.891	0.906	0.679	337-114	70.32
1 P	3	1.891	1.125	0.843	337-116	70.32
Reducers	Type #2 - #1				337-118	48.78
	Type #3 - #2				337-119	97.74
Sets	Type #1 - 11 pc	#0-9/16, 1/8NPT			337-073	266.64
	Type #2 - 13 pc	5/16-7/8, 1/4, 3/8, 1/2 NPT			337-099	417.30
	Type #3 - 9 pc	13/16-1-3/8, 3/4, 1" NPT			337-117	632.88



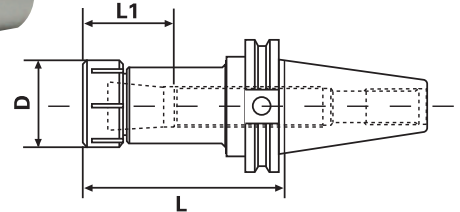
# COLLETS & CHUCKS

## CAT Taper TG Collet Chucks

- 100% Forged Construction
- Certified balanced up to 20,000 rpm
- Precision Ground Throughout
- DIN Coolant thru the flange - standard
- Shank traverse ground to obtain optimum accuracy
- Meets or exceeds ANSI specifications
- .0002" or better ensures the best possible cutting tool life
- Threaded through holes for a back-up screw (tool stop) or coolant through when removed
- TIR, 0.0006"
- Wrench not included



Complete with certificate



Taper	Collet Series	Collet Range	L	L1	D	Tightening Torque (Nm)	Code No.	SALE \$
<b>CAT40</b>								
CT40	75TG	3/64-3/4"	3.00"	1.61"	1.89"	81.3	531-284	<b>77.42</b>
CT40	100TG	3/64-1"	3.00"	2.13"	2.50"	81.3	531-288	<b>76.64</b>
CT40	100TG	3/64-1"	3.50"	2.13"	2.50"	81.3	531-290	<b>77.68</b>
CT40	100TG	3/64-1"	5.50"	2.13"	2.50"	81.3	531-292	<b>100.95</b>



Taper	Collet Series	Collet Range	L	L1	D	Tightening Torque (Nm)	Code No.	SALE \$
<b>CAT50</b>								
CT50	75TG	3/64-3/4"	3.50"	1.61"	1.89"	81.3	531-296	<b>95.36</b>
CT50	100TG	3/64-1"	5.50"	2.13"	2.50"	81.3	531-302	<b>125.84</b>

## Standard TG 75/100 Collet Sets

- For synchronous, rigid tapping operations using TG collet chuck
- Collet bore is exact tool diameter with square drive for accuracy and rigidity



No. of Pieces	Range (in.)	Increment (in.)	Code No.	SALE \$
<b>TG75</b>				
43	3/32-3/4	1/64	334-900	<b>723.00</b>
<b>TG100</b>				
15	1/8-1	1/16	334-561	<b>262.02</b>

## ER 8 Collets

- Alloy Steel
- Size range: 1 mm - 5 mm (0.039" - 0.196")



Inch	Size (mm)	Code No.	SALE \$
	1/16	337-629	<b>14.24</b>
	1/8	337-631	<b>14.24</b>
	3/16	337-625	<b>14.24</b>

### Metric

Size (mm)	Size (dec.)	Code No.	SALE \$
0.5-1.0	.019-.039"	337-635	<b>14.24</b>
1.0-1.5	.039-.059"	337-637	<b>14.24</b>
1.5-2.0	.059-.078"	337-633	<b>14.24</b>
2.0-2.5	.078-.098"	337-641	<b>14.24</b>
2.5-3.0	.098-.118"	337-643	<b>14.24</b>
3.0-3.5	.118-.137"	337-645	<b>14.24</b>
3.5-4.0	.137-.157"	337-647	<b>14.24</b>
4.0-4.5	.157-.177"	337-648	<b>14.24</b>
4.5-5.0	.177-.196"	337-649	<b>14.24</b>



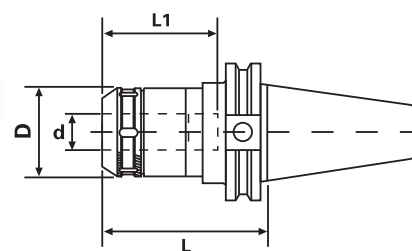


# MILLING CHUCKS

## CAT40 & 50 Milling Chucks

Limited supply at promo price!

- DIN coolant thru the flange at no extra charge
  - Rough milling or 'hogging' operations
  - Improved tool life over regular end mill holders
  - 360° gripping contact
  - Extreme rigidity over taper collets
  - 0.0002" TIR for maximum tool life and accuracy
- Dual Contact**
- Improves rigidity and reduces vibration allowing for increased feed rates and increased tool life.



### Standard

Taper	Collet Series	Collet Range	d	L	L1	D	Tightening Torque (Nm)	Code No.	SALE \$
CT40	GS 1"	.125-1.00"	1.00"	3.54"	3.15"	2.41"	50-70	531-255	164.45
CT50	GS 1-1/4"	.187-1.25"	1.25"	5.32"	4.73"	2.88"	60-80	531-268	215.61

### Dual Contact

Taper	Collet Series	Collet Range	d	L	L1	D	Tightening Torque (Nm)	Code No.	SALE \$
CT40	GS 1-1/4"	.187-1.25"	1.25"	3.54"	3.34"	2.88"	60-80	521-257	230.23

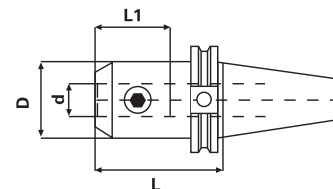
• Non-Coolant thru the flange

# STUB LENGTH END MILL HOLDER

- 100% Forged Construction
- Certified balanced to 25,000 rpm
- Precision Ground Throughout
- DIN Coolant thru the flange - standard



Complete with certificate



Taper	Hole Dia. (d)	Gage Length (L)	L1	D	Set Screw	Code No.	SALE \$
CT50	1-1/4"	2.00**	2.55"	2.75"	3/4-16	531-160	98.35

\* Stubby Length

# COLLET CHUCK SET

## Type 25 Collet Chuck Set



### Set includes:

1 chuck, 1 wrench, 1 each collet and fitted case

### Type 25 Collets

- 1/8", 3/16", 1/4", 5/16", 3/8", 1/2", 5/8", 3/4", 7/8", 1"



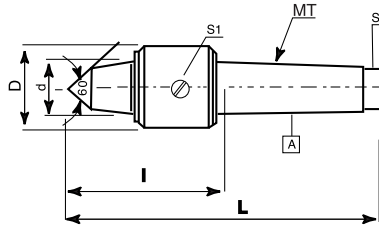
Components	Code No.	SALE \$
COLLET SETS CONSIST OF 10 COLLETS 1/8" - 1" (TYPE 25) ISA-40	334-605	276.06

# LATHE ACCESSORIES

## Skoda Extended Point Live Centers - CSN 243328



- Designed to keep dust, chips and coolant from coming inside the bearings
- Hardened and ground to 61-65 Rockwell
- Concentricity within .0002"



Made in Czech Republic



Morse Taper	D (in.)	d (in.)	L (in.)	I (in.)	Max. RPM	Load (lb)	Weight (lb)	Point Angle	Code No.	SALE \$
2	1.417	.866	5.059	2.560	6,000	594	.79	60°	310-160	126.30
3	1.850	1.181	6.575	3.386	5,000	704	1.85	60°	310-165	149.78
4	2.165	1.378	8.169	4.094	4,000	2200	3.19	60°	310-170	188.25
5	2.736	1.772	10.197	5.078	3,500	3520	7.04	60°	310-175	259.95

## Skoda Live Center Sets - CSN 243326



### Features

- The rotating spindle is extended right through the tapered shank
- Two specially designed adjustable needle-roller bearings carry all radial loads
- A heavy duty ball thrust bearing takes all axial thrust
- Complete protection of bearings from the ingress of coolant, dirt or swarf is provided by the built-in oil-seal, which also prevents loss of lubricant



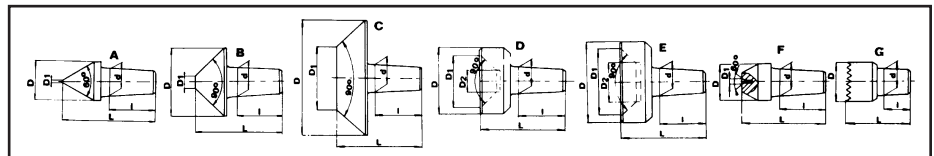
Made in Czech Republic



Morse Taper	All d	I	A L	B-G L	A D	D1	B D	D1	C D	D1	D D	D1	D2	E D	D1	D2	F D	D1	G D	Code No.	SALE \$
3	.590	.984	1.968	1.771	.787	.019	1.417	.236	2.480	1.299	1.417	1.102	.472	1.771	1.496	.866	.787	.098	.984	310-705	519.83
4	.784	1.181	2.362	2.086	.984	.019	1.771	.393	2.755	1.378	1.771	1.456	.669	2.480	2.086	1.181	.984	.196	1.259	310-710	614.48

Morse Taper	Max Load (lb)
3	880
4	2860

Maximum weigh of workpiece is independent of the individual point being used.



## 40 Position Quick Change Tool Post Holder Set



- Swing 13"-20" (B2T)

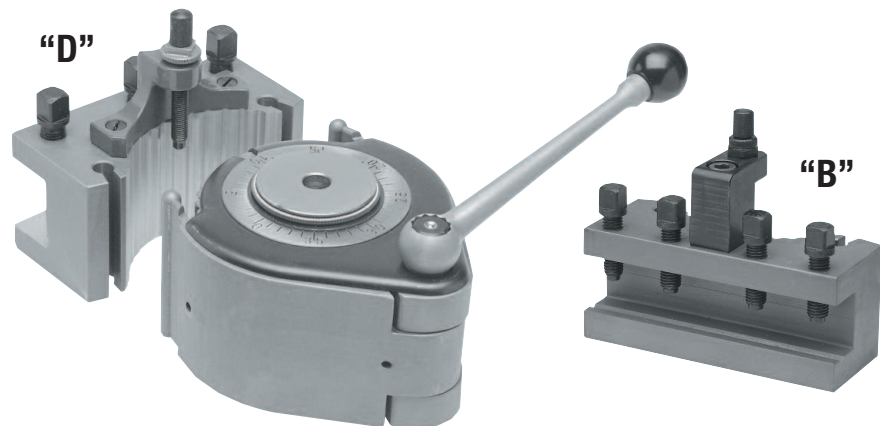
### Sets Include:

- 1 piece toolpost
- 3 piece "D" holder
- 1 piece "B" holder

Code No.: 388-415

Reg List: \$ 923.90

**\$692.93**



# CUTTING TOOLS

## BUY A VHU 56 BORING SET, GET A CAT40 SHANK FREE!

**narex**

Solve ALL Your Boring and Facing Problems

- 2-1/8"
- VHU 56

**FREE**



Code No.: 300-076  
Reg. List \$467.30

### Standard Equipment Supplied With The Master Head In Case

Boring bars	1 x 4"
Boring bars	1 x 6"
Boring bar holders	1 x 5-1/2"
	2 pcs.
Extension holder	1 x 6-7/8"
Complete set of reinforcing rings	1
Carbide round tool bits	1"
	4 pcs.
HSS square tool bits	5/16" x 1-3/16"
	4 pcs.
Reducing sleeve	1 x 3/4"
Reducing sleeve	1 x 5/8"

Code No.: 500-835

Reg List: \$ 5,039.50

**\$3,413.00**

## TiAIN Coated Parabolic Jobber Drills

**SOWA**



Made in South Africa

Designed for deep hole drilling with extremely efficient chip evacuation, without the need for frequent drill withdrawal. A heavy web and parabolic flute shape provide increased stability enabling drilling of accurate straight holes up to 5 x D.



Split Point



\* = Tap Drill sizes

Size (in.)	Size (mm)	Decimal Equivalent	Flute Length (mm)	Overall Length (mm)	Code No.	SALE \$
5/64	1.98	0.0781	24	49	134-462	2.64
3/32	2.38	0.0938	30	57	134-467	3.04
7/64	2.78	0.1094	33	61	134-472	2.72
1/8	3.17	0.1250	36	65	134-477	4.56
9/64	3.57	0.1406	39	70	134-482	3.28
5/32	3.97	0.1562	43	75	134-487	5.20
11/64	4.37	0.1719	47	80	134-492	5.52
3/16	4.76	0.1875	52	86	134-497	5.84
13/64	5.16	0.2031	52	86	134-502	6.24
7/32	5.56	0.2188	57	93	134-507	7.84
15/64	5.95	0.2344	57	93	134-512	7.84
1/4	6.35	0.2500	63	101	134-517	8.24
17/64	6.75	0.2656	69	109	134-522	8.88
9/32	7.14	0.2812	69	109	134-527	9.84
19/64	7.54	0.2969	75	117	134-532	12.48
5/16*	7.94	0.3125	75	117	134-537	11.92
21/64	8.33	0.3281	75	117	134-542	12.24
11/32	8.73	0.3438	81	125	134-547	13.20
23/64	9.13	0.3594	81	125	134-552	14.32
3/8	9.52	0.3750	87	133	134-557	13.20
25/64*	9.92	0.3906	87	133	134-562	15.36
13/32	10.32	0.4063	87	133	134-567	15.36
27/64*	10.72	0.4220	87	133	134-572	16.64
7/16	11.11	0.4374	94	142	134-577	18.80
29/64*	11.51	0.4531	94	142	134-582	21.76
15/32	11.91	0.4689	101	151	134-587	20.16
31/64*	12.30	0.4882	101	151	134-592	25.04
1/2	12.70	0.5000	101	151	134-597	18.96

## 82° Cobalt 3fl Countersink Sets

**SOWA**

EUROPEAN MADE



- M35 Cobalt
- Wide flutes provide good chip evacuation
- Positive cut
- Constant profile aids regrinding of the tool
- Self-centering of the cutting mill (three bearing points) virtually eliminates vibration



121-860

Description	Code No.	SALE \$
<b>INCH</b>		
7pc Set 1/4" to 1"	121-861	191.68
<b>METRIC</b>		
5pc Set 6.3mm to 25.0mm	121-860	169.60

## HSSE-V3 NPT Spiral Flute Pipe Taps

**SOWA**

Made in Japan



HSSE-V3% Vanadium

- Superior performance in hardened tool steels such as 4140, 4340, H13, D2.
- Up to 35 HRC



• 2.5 Pitch lead (Bottoming)

Tap	No. Flutes	Overall Length	Thread Length	Code No.	SALE \$
1/16-27	4	2-1/8	.688	123-400	19.28
1/8-27	4	2-1/8	.750	123-402	21.28
1/2-14	4	3-1/8	1.375	123-410	80.48



# SHOP SUPPLIES

## Simple Tool Setting Stand



Quick and easy way to change cutters and pull studs. Protects the taper of holder with protective insert.

Available in all tapers.

- This is an excellent helping tool for simple, rapid and safe tool holding
- For Cat, BT & NMTB Tapers



Vertical	Horizontal	Code No.	SALE \$
TL40 Taper	40 Taper x 2 (only BT & NMTB)	335-250	<b>352.48</b>

## Permanent Magnetic Lifters

### Features:

- Faster and Safer than using straps and slings.
- Beveled surface for lifting round objects.
- Magnets are maintenance free and never wear out.
- Magnets have built-in safety factor of 3.5 times the rated load. Do Not lift more than the maximum rated load.



Model No.	Capacity (lbs)	Weight (lbs)	Code No.	SALE \$
VML-300	660	18.9	230-605	<b>979.24</b>
VML-600	1320	46	230-610	<b>1,602.39</b>

## Polyurethane Hammer Series



- Steel structure containing steel shot
- Main body made from polyurethane resin, the handle from soft quality TPR



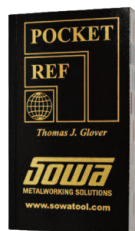
Model	Head Diameter	Head Width	Overall Length	Weight (kg)	Code No.	SALE \$
VHM-38	38mm	100mm	287mm	0.49	231-460	<b>19.04</b>
VHM-46	46mm	100mm	306mm	0.69	231-462	<b>18.40</b>
VHM-50	50mm	110mm	340mm	0.93	231-464	<b>26.56</b>
VHM-56	56mm	120mm	353mm	1.16	231-466	<b>30.40</b>

## Pocket Reference Book 4th Edition



Information for do-it-yourselfers, engineers, craftsmen, students, teachers, managers, maintenance & industrial personnel, and travelers. The ultimate reference and problem solver. The uses for this book are endless! 864 pages of valuable information in an easy to use pocket reference book. 3.2" x 5.4" x 0.8"

- Automotive
- Steels & Metals
- Electrical
- Tools
- Weights & Properties of materials
- Geology
- Math
- Welding
- Conversion tables and much more



Code No.: 180-175  
**\$17.00**

## Tool Holder Locking Devices



- For Cat, BT & NMTB Tapers



Description	Code No.	SALE \$
40 Taper	335-275	<b>155.92</b>
50 Taper (Only CAT50 & NMTB50)	335-280	<b>155.92</b>

## Electronic Tool Length Setter



- High Accuracy
- Easy Operation
- Be sure to remove all chips and oil from the sensor plate and the base of the HP-50E as well as from the workpiece and tool
- To move the tool approaching the sensor plate slowly
- When touching, the "LED" turns on immediately and "H" is just 50.00 mm (or 2")
- LED will not function if batteries are not set in correctly.
- Designed to be used on ferrous and non-ferrous materials



Model No.	H	Base Dia.	Sensor Plate Dia.	Code No.	SALE \$
With Magnetic Base					
HP-50EM	50 mm	40mm	12.7mm	337-976	<b>342.48</b>

## Touch Point Sensor (with Beeper)



- Model No. VPS-3/4B
- Accuracy: within 0.005mm
- 3/4" shank



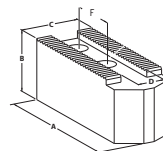
Model No.	Code No.	SALE \$
VPS-3/4B	337-962	<b>114.56</b>

## Metric Serrated Soft Top Jaws - Pointed

### Quality Import Jaws

- For Kitagawa power chucks:  
Models B, BT, B200, BT200, HOH, HOB, N, NL
- Set of 3

**QUALITY IMPORT**



Chuck Dia.	Serration	A	B	C	D	F	Code No.	SALE \$
150(6")	1.5x60°	70	38	25	12	20	656-050	<b>41.12</b>
210(8")	1.5x60°	90	50	38	14	25	656-055	<b>55.84</b>
254(10")	1.5x60°	110	42	40	16	30	656-060	<b>64.64</b>
304(12")	1.5x60°	120	50	38	18	30	656-065	<b>101.52</b>
381(15")	1.5x60°	165	62	62	22	43	656-070	<b>264.56</b>



## 3 Jaw Cast Iron Body Scroll Chucks - 2PC Hard Rev. Jaws

### Features:

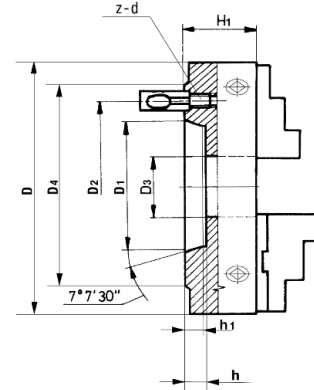
- 3 jaw, self-centering scroll chuck with manual gripping and a high quality cast iron body
- Smart design, allowing inner parts to be replaced quickly
- Mounted on the machine-tool spindle from the back of the chuck, using the adapter plate

### Application:

- This chuck is designed for all types of workshop machining operations on conventional lathes and milling fixtures

**QUALITY  
IMPORT**

Camlock Mount



Chuck Size D (in.)	D1 (in.)	D2 (in.)	D3 (in.)	D4 (in.)	H1 (in.)	h (in.)	h1 (in.)	z-d	Max. input torque (ft/lbs)	Max Speed r/min.	Weight (lbs.)	Code No.	SALE \$
10" D1-6	4.188"	5.252"	2.756"	7.126"	3.858"	0.630"	0.512"	6-M16x1.5	236.03	1600	70.40	4440940	705.50
12" D1-8	5.501"	6.748"	4.134"	8.858"	4.075"	0.709"	0.551"	6-M20x1.5	295.04	1200	112.20	4440950	1,059.02

## 4 Jaw Cast Iron Body Independent Chucks - Hard Solid Jaws

### Features:

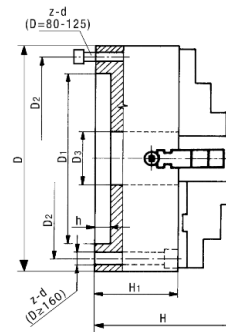
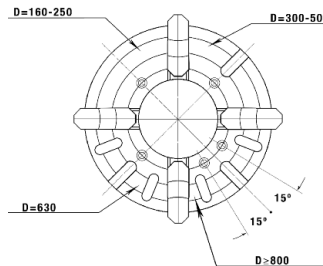
- 4 jaw, independent chuck with manual gripping, and a high quality cast iron body.
- 4 jaws ensure the precise centering of square-shaped workpieces with maximum permitted gripping force
- Chucks with diameters 10" and above are equipped with additional t-slots, permitting the addition of extra jaws
- Mounted on the machine tool spindle from the back of the chuck, using the adapter plate

### Application:

- This precision chuck, with increased gripping accuracy, is made for all types of very high precision workshop machining operations on conventional lathes
- Suitable for machining square and round workpieces

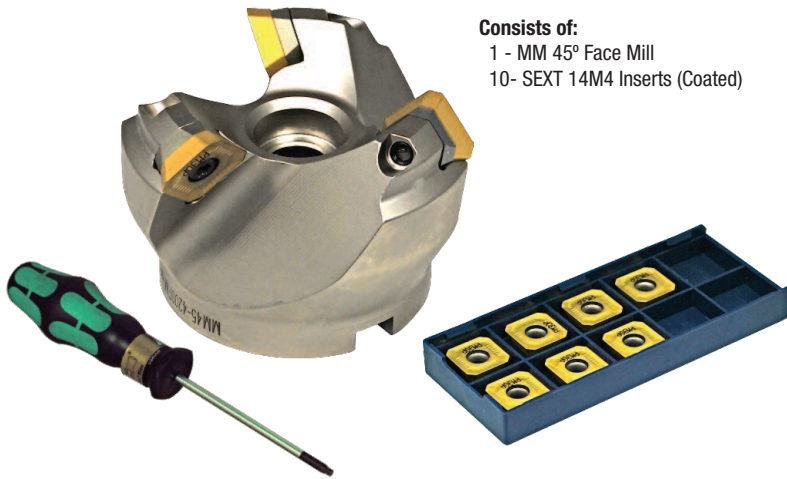
**QUALITY  
IMPORT**

Plain Back

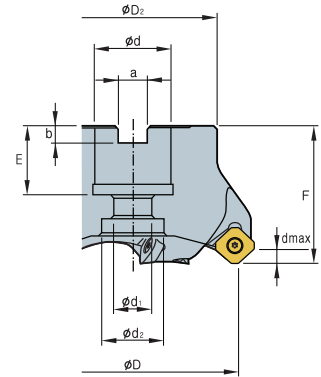


Chuck Size D (in.)	D1 (in.)	D2 (in.)	D3 (in.)	H (in.)	H1 (in.)	h (in.)	z-d	Max. input torque (ft/lbs)	Max Speed r/min.	Weight (lbs.)	Code No.	SALE \$
10"	4.331"	5.118"	2.953"	4.724"	3.150"	0.236"	4-M12	110.64	1600	50.60	4445810	376.04
12"	5.984"	5.118"	2.953"	5.276"	3.543"	0.236"	4-M12	132.77	1200	85.80	4445815	537.20

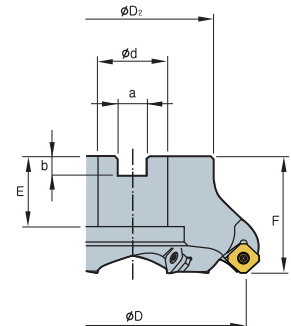
## 45° Max Mill Kits



**Consists of:**  
 1 - MM 45° Face Mill  
 10- SEXT 14M4 Inserts (Coated)

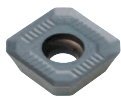


Ø2.0 ~ Ø2.50

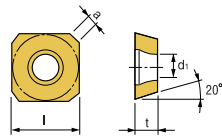


Ø3.150 ~ Ø6.299

Designation	Cutter No.	ØD	Ød	ØD <sub>2</sub>	Ød <sub>1</sub>	Ød <sub>2</sub>	a	b	E	F	No. of Inserts	d max
MM 45° Coarse Pitch												
4250FM	147-811	2.000	0.750	1.654	0.433	0.709	0.321	0.181	0.787	1.575	3	
4300FM	147-813	3.000	1.000	1.969	0.551	0.787	0.384	0.248	0.866	1.969	5	0.256



■ Features  
 Excellent general purpose geometry



l	t	a	d1
.551	.157	.104	.173

### Kit Contents

2" Cutter (147-811) c/w 10 inserts (147-730)  
 3" Cutter (147-813) c/w 10 inserts (147-730)

### Insert

SEXT 14M4 AGSN PM25C  
 SEXT 14M4 AGSN PM25C

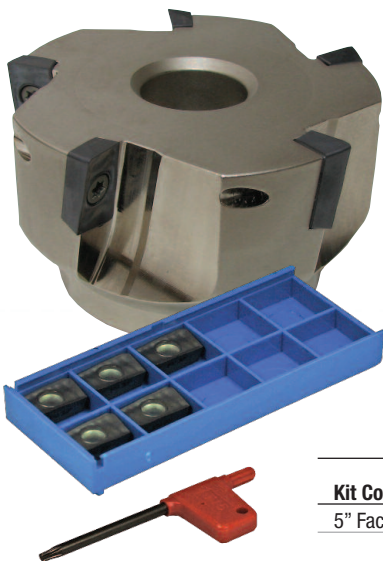
### Kit Code No.

149-932  
 149-936

### SALE \$

**289.43**  
**440.18**

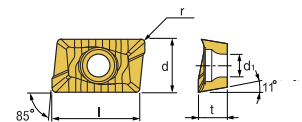
## APFM Face Mill Kit



**Consists of:**  
 1 - APFM 16-90 Face Mill  
 10- APKT 1604 Inserts (Coated)



■ Features  
 Excellent free cutting geometries for a variety of applications



l	d	t	r	d1
.650	.376	.227	1/32	.175

### Kit Contents

5" Face Mill (147-015) c/w 10 inserts (147-333)

### Insert

APKT 1604 PDSR M PM30P

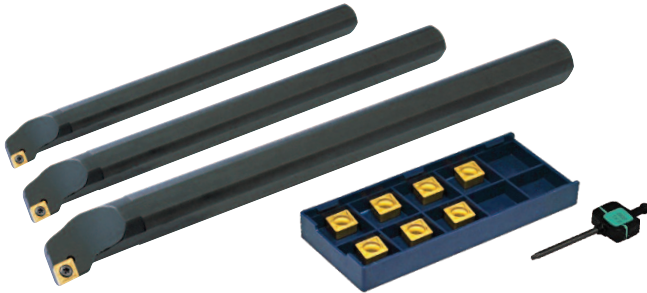
### Kit Code No.

149-911

### SALE \$

**534.83**

## SI-SCLCR/L Master Boring Bar Kit

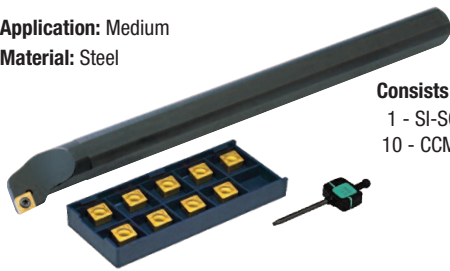


- Consists of:**  
 1 - 5/8" Ø B/Bar, SI-SCLCR 10-3 (#145-925)  
 1 - 3/4" Ø B/Bar, SI-SCLCR 12-3 (#145-926)  
 1 - 1" Ø B/Bar, SI-SCLCR 16-3 (#145-927)  
 10 - CCMT 32.51 inserts  
 1 - wrench (#146-940)

Application	Material	Kit Contents	Right Hand Kit Code No.	SALE \$
Medium	Steel	1 pc SI SCLCR 5/8", 3/4", 1" Boring Bars	10 pcs CCMT 32.51 F2P PT22C (146-361)	149-844 <b>253.80</b>

## SI-SCLCR Boring Bar Kits

**Application:** Medium  
**Material:** Steel



- Consists of:**  
 1 - SI-SCLCR Boring Bar  
 10 - CCMT 32.51 Inserts (Coated) (146-361)

Kit Contents	Right Hand Kit Code No.	SALE \$
1 pc SI SCLCR 10-3(5/8") (145-925)	149-873	<b>122.03</b>
1 pc SI SCLCR 12-3(3/4") (145-926)	149-874	<b>127.73</b>
1 pc SI SCLCR 16-3(1") (145-927)	149-875	<b>140.55</b>

## MTG - Multi Turn Groove Kits

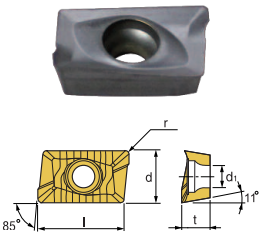


- Consists of:**  
 1 - MGEHR Toolholder  
 5 - MGMN Inserts 300M/400M (Coated)

Kit Contents	Kit Code No.	SALE \$
MGEHR 16-3 1" Shank (148-066) c/w 5-3mm inserts (149-042)	149-898	<b>135.98</b>
MGEHR 16-4 1" Shank (148-074) c/w 5-4mm inserts (149-049)	149-899	<b>188.93</b>

# INSERT CLEAROUT!

APKT 1604 PDTR PM30P

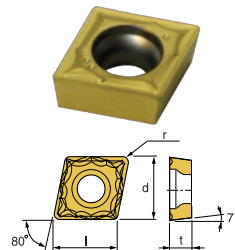


(inch)				
l	d	t	r	d1
.650	.376	.227	1/32	.175

- Features
- Excellent free cutting geometries for a variety of applications

**149-146Y**  
**\$6.05**

CCMT 32.51-F2P PT22C

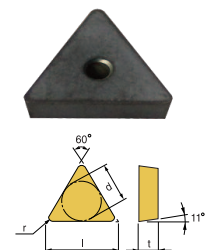


(inch)			
l	d	t	r
.382	3/8	5/32	1/64

- Features
- Excellent chip control at wide range of cutting conditions.
- Suitable for stainless steel cutting.

**146-361Y**  
**\$4.82**

TPUN 160308 PTM30U




(inch)			
l	d	t	r
.650	3/8	1/8	1/32

**146-780Y**  
**\$4.50**



# DRIVEN TOOLS

MADE IN ITALY 

*Designed, manufactured, and assembled in Italy*  
*Angular contact bearings + Taper roller bearings*  
*Gleason spiral bevel gears*  
*Corrosion resistant steel body*  
*2 year warranty*

**ASK ABOUT OUR PRICE MATCH GUARANTEE**

## NOW AVAILABLE FROM STOCK



DMG MORI



DOOSAN



HAAS



MAZAK



*Head over to [www.sowatool.com](http://www.sowatool.com)  
and download the six page brochure*

Distributed By:

Tel: 440-968-3228  
Fax: 440-968-3611  
1-800-445-1068

# Hemly

TOOL SUPPLY INC.

9700 Madison Rd  
Montville, OH  
44064

e-mail: [sales@hemlytool.com](mailto:sales@hemlytool.com) • [www.hemlytool.com](http://www.hemlytool.com)

**Pricing valid from October 1 to January 31, 2018 or while quantities last.**

We reserve the right to make changes without notice and accept no liabilities for mistakes and printing errors. All taxes extra.

**SOWA**  
METALWORKING SOLUTIONS

Sowa Tool & Machine Co. Ltd.  
500 Manitou Drive  
Kitchener, Ontario  
N2C 1L3

Maumee, Ohio Branch  
416 W. Dussel Drive  
Maumee, Ohio  
43537

Toll Free: 1-800-265-8221  
Phone: (519) 748-5750  
Fax: (519) 748-9304  
Email: [sales@sowatool.com](mailto:sales@sowatool.com)  
web: [www.sowatool.com](http://www.sowatool.com)



\* U S F 2 1 7 3 \*

Printed in Canada