



# DOVELock™ QUICK CHANGE JAW SYSTEM

NEW

PATENT PENDING

## Models:

DJ4 Master Jaw Kit (English)  
DJ4SK Starter Jaw Kit (English)  
DJ6 Master Jaw Kit (English)  
DJ6SK Starter Jaw Kit (English)  
DJ6M Master Jaw Kit (Metric)  
DJ8 Master Jaw Kit (English)  
DJ8SK Starter Jaw Kit (English)

- Quick change for fast setups in under 1 minute. DoveLock jaws are changed from the top by loosening 3 quick-clamps. Jaws can be removed from the front or side.
- Workstop for position repeatability to  $\pm 0.001"$ .
- Aluminum jaws are machined not extruded.
- Jaws are machinable for part profile or steps.
- Jaws can be turned 180° to do 2 different setups.
- Machinable jaws sold separately. See reverse side for available sizes
- Master jaw set and jaw kits machined of 6061 aluminum.
- Patent Pending design
- Fits all industry standard Kurt 4, 6, and 8 inch vises and towers.

### Master jaw set includes:

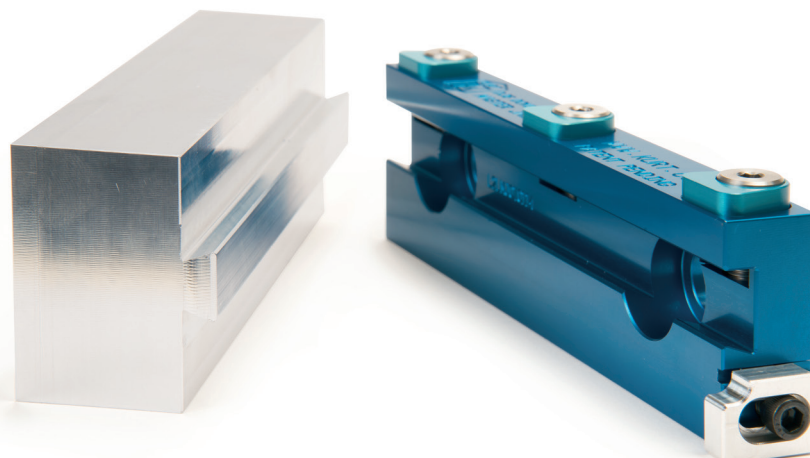
2 master jaws, 4 cap screws, T-handle hex key

### Starter kits include:

2 master jaws, 4 cap screws, T-handle hex key,  
2 machineable aluminum jaws

### Jaw kits include:

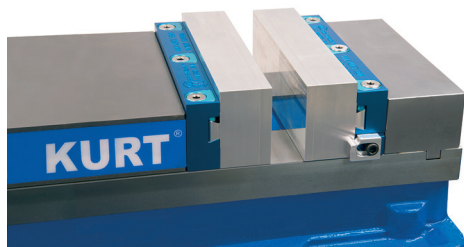
2 machinable aluminum jaws



Jaw can be flipped 180° for 2nd setup

Aluminum jaw machined not extruded

Workstop for position repeatable



Workstop slot for repeatability in longer jaws

## DoveLock 4 Inch Jaws

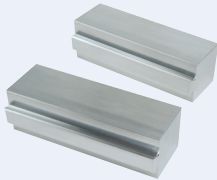
DJ4SK Starter Kit \$ \_\_\_\_\_



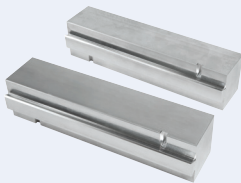
DJ4 Master Jaw Kit \$ \_\_\_\_\_



DJ404AL Jaw Kit \$ \_\_\_\_\_



DJ406AL Jaw Kit \$ \_\_\_\_\_

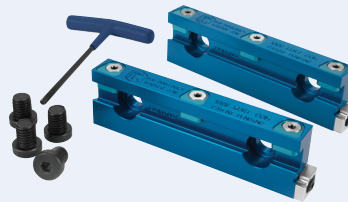


## DoveLock 6 Inch Jaws

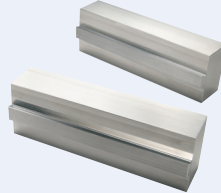
DJ6SK Starter Kit \$ \_\_\_\_\_



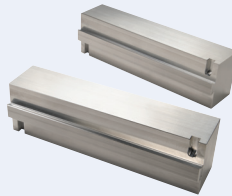
DJ6 Master Jaw Kit \$ \_\_\_\_\_



DJ606AL Jaw Kit \$ \_\_\_\_\_



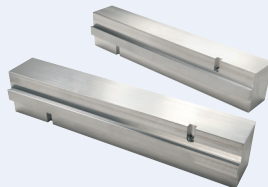
DJ607AL Jaw Kit \$ \_\_\_\_\_



DJ608AL Jaw Kit \$ \_\_\_\_\_



DJ610AL Jaw Kit \$ \_\_\_\_\_

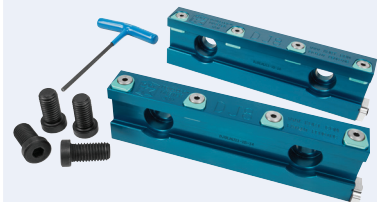


## DoveLock 8 Inch Jaws

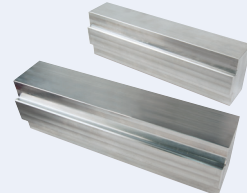
DJ8SK Starter Kit \$ \_\_\_\_\_



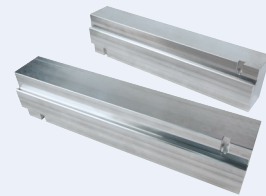
DJ8 Master Jaw Kit \$ \_\_\_\_\_



DJ808AL Jaw Kit \$ \_\_\_\_\_



DJ810AL Jaw Kit \$ \_\_\_\_\_

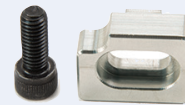


Part Number	Length	Width	Height	Weight
DJ4 Master Jaw Kit	4.000	0.630	1.307	1 Lb.
DJ4SK Starter Jaw Kit	4.000	N/A	N/A	3 Lbs.
DJ404AL-JAWKIT	4.000	1.275	1.414	2 Lbs.
DL406AL-JAWKIT	6.000	1.275	1.414	3 Lbs.
DJ6 Master Jaw Kit	6.000	0.775	1.725	2 Lbs.
DJ6M Master Jaw Kit	6.000	0.775	1.725	2 Lbs.
DJ6SK Starter Jaw Kit	6.000	N/A	N/A	6 LBS.
DJ606AL-JAWKIT	6.000	1.250	1.980	4 Lbs.
DJ607AL-JAWKIT	7.000	1.500	1.980	5 Lbs.
DJ608AL-JAWKIT	8.000	1.500	1.980	6 Lbs.
DJ610AL-JAWKIT	10.000	1.500	1.980	7 Lbs.
DJ8 Master Jaw Kit	8.000	1.075	2.220	4 Lbs.
DJ8SK Starter Jaw Kit	8.000	N/A	N/A	11 Lbs.
DJ808AL-JAWKIT	8.000	1.475	2.450	7 Lbs.
DJ810AL-JAW KIT	10.000	1.475	2.450	8 Lbs.

**Distributed by:**



DJ6HT T-Handle Hex Key \$ \_\_\_\_\_



Workstop DJ6-45-SA \$ \_\_\_\_\_



Quick clamp DJ6-35-SA \$ \_\_\_\_\_