

HEADQUARTERS
HEMLY TOOL SUPPLY INC.
 9700 Madison Road
 Montville, OH 44064
1-800-445-1068
Tel: 440-968-3228
Fax: 440-968-3611

Hemly
TOOL SUPPLY INC.

www.hemlytool.com
 e-mail: sales@hemlytool.com

CT BRANCH
HEMLY TOOL SUPPLY OF CT, LLC
 111 Pane Road
 Newington, CT 06111
1-888-474-1300
Tel: 860-436-4570
Fax: 860-436-4807



60000
8-Drawer Chest
 • Gas-shock lid stays.
 • Ergonomic side handles.
 • 60 W x 24 D x 20 1/2" H.

60121
11-Drawer Roller Cabinet
 • Coated MDF work surface.
 • Ergonomic side handle.
 • 6 x 2" casters.
 • 60 W x 24 D x 43 1/2" H.



60101
Top Canopy
 • Gas-shock lid stays.
 • Ergonomic side handles.
 • 60 W x 24 D x 22 3/4" H.

60121
11-Drawer Roller Cabinet
 • Coated MDF work surface.
 • Ergonomic side handle.
 • 6 x 2" casters.
 • 60 W x 24 D x 43 1/2" H.

New Benchmark® Colors Now Available!



Get your new Benchmark® Series Tool Box in one of our New Vein Colors!

Benchmark® Standard Colors:



To order, place the color code behind the model number. Example, 60121BUR.

Benchmark Series® Features & Benefits:

- Tubular lock sets.
- Gas-shock lid stays.
- Ball-bearing drawer slides hold up to 120 lbs.
- Extra wide drawers hold up to 420 lbs. each.
- Heavy-duty, non-slip drawer liners.
- Roller cabinets include coated, MDF work surface.
- Soft rubber ergonomic side handles.
- 6 x 2" roller bearing casters / 900 lbs. per caster capacity.
- Aluminum corner trim.

Model	Description	List Price	Sale Price
60000	8-Dr. Chest	\$3,361.00	\$2,016.95
60101	Canopy	2,014.40	1,208.95
60121	11-Dr. Cabinet	4,927.00	2,956.95
62017	17-Dr. Cabinet	5,235.00	3,141.95

**New! 62" Benchmark Series.
 17-Drawer Triple Bank Cabinet!**



62017
17-Drawer Roller Cabinet
 • 62 W x 24 D x 43 1/2" H.

- Coated, MDF Work Surface
- Tubular Lock Sets
- Ergonomic End Handle
- Ball-bearing Drawer Slides
- Full-length Drawer Pulls
- Aluminum Corner Trim
- 6 x 2" Roller Bearing Casters

Since 1911
Kennedy
 USA MADE CHESTS AND CABINETS

**Coming Soon!
 62" Top Chest**

Offer good June 1 — August 31, 2013

Benchmark Series®



Locker & Side Cabinet:

- Tubular lock sets.
- Ball-bearing drawer slides hold up to 120 lbs.
- Heavy-duty, non-slip drawer liners.
- Aluminum corner trim.
- Attach to either side of roller cabinet.



Benchmark Series® Features & Benefits:

- Tubular lock sets.
- Gas-shock lid stays.
- Ball-bearing drawer slides hold up to 120 lbs.
- Extra wide drawers hold up to 420 lbs. each.
- Heavy-duty, non-slip drawer liners.
- Roller cabinets and side cabinets include coated, MDF work surface.
- Soft rubber ergonomic side handles.
- 6 x 2" roller bearing casters / 900 lbs. per caster capacity.
- Aluminum corner trim.

New Benchmark® Colors Now Available!



Be the first to have a Benchmark® Series product in one of our new vein colors!



30" x 30" Roller Cabinet & Side Cabinet:

- Tubular lock sets.
- Ball-bearing drawer slides hold up to 120 lbs.
- Durable, coated MDF work surface.
- Heavy-duty, non-slip drawer liners.
- Aluminum corner trim.
- 6 x 2" roller bearing casters.
- 30200 attaches to either side of roller cabinet.



New Items!

Model	Description	Width	Depth	Height	List Price	Sale Price
53000	7-Dr. Chest	53"	24"	20½"	\$2,039.60	\$1,223.95
53101	Canopy	53"	24"	22¾"	1,403.40	842.95
53001	11-Dr. Cabinet	53"	24"	43½"	3,172.20	1,903.95
46000	8-Dr. Chest	46"	24"	20½"	2,856.80	1,714.95
46101	Canopy	46"	24"	22¾"	1,746.40	1,047.95
46003	11-Dr. Cabinet	46"	24"	43½"	3,450.60	2,070.95
40200	3-Dr. Locker	26⅝"	24"	62"	2,115.00	1,269.95
20200	6-Dr. Side Cab.	21"	24"	35¾"	2,215.40	1,329.95
30006	6-Dr. Roller Cab.	30½"	24"	42½"	1,999.90	1,199.95
30200	6-Dr. Side Cab.	30½"	24"	42½"	1,999.90	1,199.95
TB18	Hang-on Panel	18"	½"	29"	200.00	120.95
TB20	Hang-on Panel	20"	½"	29"	200.00	120.95
TB24	Hang-on Panel	22⅞"	½"	35⅝"	200.00	120.95

Toolboard Hang-on Panel



- Reinforced steel panels have square hole perforations.
- Includes 10-pc. toolholder set.
- Attaches to top of roller cabinet through end handle percings (bolts included). Includes adhesive tape for securing bottom corners.



**TB18
TB20
TB24**

SAFETY & SECURITY

MAXIMUM STORAGE

DURABILITY & LONG LIFE

HIGHER PRODUCTIVITY



360 / 297X

Don't forget to include accessories that protect your cabinet and increase storage.

Accessories:

80456 - Heavy-duty Top Mat
80873 - Sliding Steel Drawer Tray
80876 - Screwdriver Tray, Brown
80878 - Screwdriver Tray, Red
82171 - Plastic Work Surface
82105 - Resistop Work Surface
81927— 81932 - ABS Drawer Dividers



266 / 295X

Accessories:

80456 - Heavy-duty Top Mat
80873 - Sliding Steel Drawer Tray
80876 - Screwdriver Tray, Brown
80878 - Screwdriver Tray, Red
82171 - Plastic Work Surface
82105 - Resistop Work Surface
81927— 81932 - ABS Drawer Dividers



520B / MC22B / 275X

Accessories:

80455 - Heavy-duty Top Mat
80870 - Sliding Steel Drawer Tray
80876 - Screwdriver Tray, Brown
80878 - Screwdriver Tray, Red
82170 - Plastic Work Surface
82104 - Resistop Work Surface
81921— 81926 - ABS Drawer Dividers



526B / 5150B / 297X

Accessories:

80456 - Heavy-duty Top Mat
80873 - Sliding Steel Drawer Tray
80876 - Screwdriver Tray, Brown
80878 - Screwdriver Tray, Red
82171 - Plastic Work Surface
82105 - Resistop Work Surface
81927— 81932 - ABS Drawer Dividers

Industrial Series Standard Colors:

To order, place the color code behind the model number. Example, 295RW.

Industrial Series Chest and Chest Bases Features & Benefits:

- Tubular lock sets.
- Two-piece, welded I-beam drawer slides.
- 266 and 360 include lift-out tray with socket set divider.
- 520, 526 and 52611 come with wool, felt-lined drawers and drawer dividers. Brown wrinkle finish only.
- MC22 and MC28 have wool-felt lined top drawer. Brown wrinkle finish only.

Industrial Series Roller Cabinets Features & Benefits:

- Tubular lock sets / Ball-Bearing Drawer Slides / 5" x 2" Roller Bearing Casters & Tubular End Handles



52611B / MC28B / 295X

Accessories:

80456 - Heavy-duty Top Mat
80873 - Sliding Steel Drawer Tray
80876 - Screwdriver Tray, Brown
80878 - Screwdriver Tray, Red
82171 - Plastic Work Surface
82105 - Resistop Work Surface
81927— 81932 - ABS Drawer Dividers



273X

Accessories:

80455 - Heavy-duty Top Mat
80870 - Sliding Steel Drawer Tray
80876 - Screwdriver Tray, Brown
80878 - Screwdriver Tray, Red
82170 - Plastic Work Surface
82104 - Resistop Work Surface
81921— 81926 - ABS Drawer Dividers

- Swing-down panel conceals bottom compartment.
- 5 x 1 1/4" casters.

**5 Drawer Hang On Cabinets**

- 185X attaches to 27" wide roller cabinets.
- 205X attaches to 29" wide roller cabinets.
- Ball-bearing drawer slides.
- Tubular lock set.



DS1

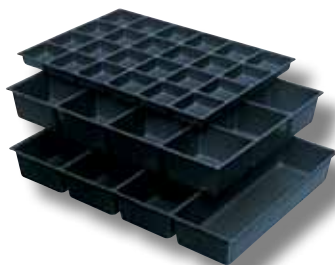
Fold Away Cabinet Shelf

- Folds flat when not in use.
- Raised sides keep tools from rolling off.

Model	Description	Width	Depth	Height	List Price	Sale Price
360	10-Dr. Chest	26 1/8"	12 1/8"	18 7/8"	\$ 858.60	\$515.95
266	6-Dr. Chest	26 1/8"	12 1/8"	14 3/4"	602.80	361.95
520B	7-Dr. Chest	20 1/8"	8 1/2"	13 5/8"	378.60	227.95
526B	8-Dr. Chest	26 3/4"	8 1/2"	13 5/8"	479.40	287.95
52611B	11-Dr. Chest	26 3/4"	8 1/2"	18"	602.80	361.95
MC22B	2-Dr. Chest Base	21 5/8"	9 5/8"	7 7/8"	217.40	130.95
5150B	2-Dr. Chest Base	26 3/4"	12 1/2"	9 1/2"	235.20	141.95
MC28B	2-Dr. Chest Base	28 1/8"	9 5/8"	7 7/8"	235.20	141.95
297X	7-Dr. Cabinet	29"	20"	35"	1,211.00	726.95
295X	5-Dr. Cabinet	29"	20"	35"	1,053.60	632.95
275X	5-Dr. Cabinet	27"	18"	35"	968.00	580.95
273X	3-Dr. Cabinet	27"	18"	35"	792.80	475.95
185X	5-Dr. Side Cab.	13 5/8"	18"	29"	619.00	371.95
205X	5-Dr. Roller Cab.	13 5/8"	20"	29"	672.80	403.95
DS1	Fold Away Shelf	20 1/8"	17 1/4"	1"	127.80	76.95

Tool Storage Accessories

Protect your Tool Box and Increase Storage!



ABS Plastic Drawer Organizer

- Maximize drawer space, organize, separate and arrange tools.
- Made of durable ABS plastic.
- Round-cornered compartments for quick, easy retrieval of small parts.
- Fit either 2" or 4" or larger drawers.
- One-piece design for 27" & 29" cabinets.
- Two-piece design for 34" wide cabinets.



Parts not included

Divider Insert Description	For 27" Cab. No.	List Price	Sale Price	For 29" Cab. No.	List Price	Sale Price	For 34" Cab. No.	List Price	Sale Price	5 1/2" Adder Only, No.	List Price	Sale Price
2" Dr., 6 Comp.	81921	\$48.00	\$28.95	81927	\$50.40	\$30.95	81933	\$66.40	\$39.95			
2" Dr., 11 Comp.	81922	\$48.00	\$28.95	81928	\$50.40	\$30.95	81934	\$66.40	\$39.95			
2" Dr., 24 Comp.	81923	\$48.00	\$28.95	81929	\$50.40	\$30.95	81935	\$66.40	\$39.95	81939	\$19.40	\$11.95
4" Dr., 4 Comp.	81924	\$48.00	\$28.95	81930	\$50.40	\$30.95	81936	\$68.60	\$41.95	81940	\$19.40	\$11.95
4" Dr., 7 Comp.	81925	\$48.00	\$28.95	81931	\$50.40	\$30.95	81937	\$68.60	\$41.95			
4" Dr., 12 Comp.	81926	\$48.00	\$28.95	81932	\$50.40	\$30.95	81938	\$68.60	\$41.95			



Heavy-Duty Cabinet Top Mat

- Black vinyl mat with pyramid shape embossing increases friction, reduces slipping.
- Lays flat with more rigidity.
- Long wearing, resists oil.



Sliding Steel Drawer Tray

- Slides freely in drawer.
- Tan texture finish.
- For 4" deep or deeper drawers.

Model	Fits Cabinets	List Price	Sale Price
80455	27" W	\$57.20	\$34.95
80456	29" W	66.40	39.95

Model	Fits Drawers	List Price	Sale Price
80870	23" W	\$38.80	\$23.95
80873	25" W	41.20	24.95



Screwdriver Tray

- Attaches to any Kennedy roller cabinet.
- Also holds standard aerosol spray cans.



Magnetic Parts Tray

- A product of Homak Mfg.
- Heavy-duty magnets hold small parts in place.
- Magnetized tray back sits securely on metal surfaces.

Model	Color	List Price	Sale Price
80876	Brown Wrinkle	\$32.00	\$19.95
80878	Red Smooth	32.00	19.95

Model	Width	Depth	Height	List Price	Sale Price
80481	9 1/2"	5 1/2"	1 1/4"	\$48.00	\$28.95



Cabinet Plastic Work Surface

- Seamless, ABS black plastic cover fits snugly over roller cabinet top.
- 3/4" raised lip helps prevent roll offs.



Resistop Work Surface

- Solid phenolic, non-conductive black surface.
- Durable, high impact and shock resistant.
- Stain, chemical and corrosion resistant.

Model	Fits Cabinets	List Price	Sale Price
82170	27" W	\$71.00	\$42.95
82171	29" W	72.00	43.95

Model	Fits Cabinets	List Price	Sale Price
82104	27" W	\$192.20	\$115.95
82105	29" W	215.00	129.95



K20B Professional Tool Box

- Vinyl cushioned steel core top handle.
- Lift-out tray.
- Brown wrinkle finish.



1022B Cantilever Tool Box

- Moveable/removable partitions and divider sets in two trays.
- Steel core, vinyl cushioned handle.
- Brown wrinkle finish, black enamel trays.

Model	Width	Depth	Height	List Price	Sale Price
K20B	20 1/8"	8 5/8"	9 3/4"	\$158.60	\$95.95

Model	Width	Depth	Height	List Price	Sale Price
1022B	22 1/8"	10"	12 5/8"	\$227.20	\$136.95