



Simply better.

# Innovation

Distributed by:

## RiteHite hold down clamps

- Self-positioning, single component design.
- Wide clamping range – adjustments up to 5".
- Quick and easy set-up, for T-slot table.
- Made of strong, ductile iron.
- Swivel rocker attached to the body allows the clamp to self-align.

	Bolt Size	Max Clamping Height	Nominal Dimensions	Clamping Force	Max Torque	Price
--	-----------	---------------------	--------------------	----------------	------------	-------

**RiteHite Long Reach, Model L** for a longer throw.

<b>500L</b>	1/2"	2 1/2"	5 3/4 x 1 1/8 x 1 1/2	8,800 lbs	73 LB-FT	<b>\$25.70</b>
<b>625L</b>	5/8"	3 1/2"	6 3/4 x 1 3/4 x 1 1/2	14,500 lbs	163 LB-FT	<b>\$34.06</b>
<b>750L</b>	3/4"	5"	9 x 2 1/8 x 2 1/4	19,000 lbs	237 LB-FT	<b>\$52.67</b>

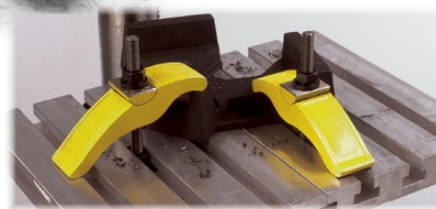
**RiteHite Standard Reach, Model S** slightly smaller than L model.

<b>501S</b>	1/2"	1 3/4"	4 1/4 x 1 1/8 x 1 1/2	13,200 lbs	110 LB-FT	<b>\$24.99</b>
<b>626S</b>	5/8"	2 3/4"	5 1/2 x 1 3/4 x 1 1/2	19,000 lbs	213 LB-FT	<b>\$33.27</b>
<b>751S</b>	3/4"	3 1/2"	7 x 2 1/8 x 2 1/4	27,600 lbs	345 LB-FT	<b>\$51.82</b>

RiteHite charts are for general guidelines only. Specific values may vary depending on but not limited to bolt size and strength, condition, size and pitch of threads, coefficient of friction between parts and other variable factors.



FROM  
**24<sup>99</sup>**



## Claw clamp, CL

- A welder's versatile clamp or spreader.
- Spindle mechanism is on the back side of the sliding arm, out of the work area.
- V-grooved pressure plate made of high grade cast iron, swivels up to 30°.
- Jaw reverses to act as a spreader.

	Clamping Capacity	Throat Depth	Clamping Force	Price
--	-------------------	--------------	----------------	-------

<b>CL24</b>	24"	4 3/4"	1775 lbs	<b>\$204.64</b>
-------------	-----	--------	----------	-----------------



FROM  
**204<sup>64</sup>**

## Regular duty, deep throat version, DT 2400 series

- An extended throat depth of 8" for extra reach.
- Includes standard rail profile, MorPad, ergonomic BESSEY® grip.



	Clamping Capacity	Throat Depth	Clamping Force	Price
--	-------------------	--------------	----------------	-------

<b>DT 2400-12</b>	12"	8"	1770 lbs	<b>\$153.50</b>
<b>DT 2400-24</b>	24"	8"	1770 lbs	<b>\$236.63</b>



FROM  
**153<sup>50</sup>**

### Newsletter & Offers...

Sign up for news & exclusive offers from BESSEY® by emailing your request to [info@besseytools.com](mailto:info@besseytools.com)

### Join us on...

- facebook.com/BesseyToolsNorthAmerica
- instagram.com/besseytools\_na/
- twitter.com/BesseyTools
- youtube.com/user/BesseyTools
- [besseytools.com](http://besseytools.com)

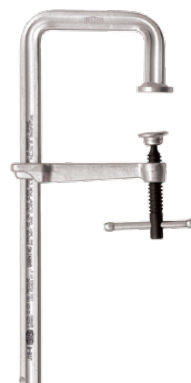




## Specialty all-steel step-over bar clamp, J18

- Clear obstructions and maintain clamping pressure.
- Extremely sturdy return rail lets the J clamps "step-over" the lip on channel iron, angle-iron, IBeam or other obstructions.
- Forged sliding arm made from tempered, drop-forged steel for long service life.
- Tempered spindle—heat treated, high carbon Acme threaded screw, tempered and quenched to give greater load capacity with longer service life. Spatter resistant.
- Sturdy T-bar – High-strength electro-galvanized sliding pin T-handle - rounded ends for comfort, size engineered to load capacity.
- Comes with standard swivel pad built for solid, dependable, performance.

91<sup>92</sup>



	Clamping Capacity	Throat Depth	Clamping Force	Rail Step-Over Up To	Price
<b>J18-8</b>	10"	4 3/4"	880 lbs	2 1/4"	<b>\$91.92</b>



## OMEGA bend clamps, RSC

- Patented OMEGA bend maintains a positive clamping pressure longer under heavy vibration than a conventional clamp.
- Durable, lightweight and easy to use.

FROM 38<sup>70</sup>



	Clamping Capacity	Throat Depth	Clamping Force	Price
<b>RSC-8</b>	8"	4"	770 lbs	<b>\$38.70</b>
<b>RSC-12</b>	12"	5 1/2"	1100 lbs	<b>\$55.14</b>
<b>RSC-24</b>	24"	4 3/4"	1100 lbs	<b>\$71.60</b>

## Bearing Mounting Unit, BRG33

581<sup>56</sup>



- Safe, precise and quick mounting of bearings, bushings, sealing rings, etc.
- The bearing is supported on its inner and outer ring during installation.
- Clear size markings, and impact resistant collets (made of durable sheet material) minimize damage to, and extend the life of, expensive bearings.
- Specially designed for quick, accurate, damage free and safe mounting of bearings with bore dimensions of 10 to 50mm and O.D. 26 - 110mm.

	Set Includes	Price
<b>BRG33</b>	33 rings; 3 impact sleeves (alu); dead-blow hammer & carrying case	<b>\$581.56</b>

## Magnetic square, WMS

- Simple magnet to hold work at set angles.



21<sup>49</sup>

	Pull	Nominal Dimensions	Pre-set Angles
<b>WMS-5</b>	112 lbs	3 3/4" x 4 3/8" x 3/4"	90/45°



facebook.com/BesseyToolsNorthAmerica  
instagram.com/besseytools\_na/  
twitter.com/BesseyTools  
youtube.com/user/BesseyTools



# IBEAM

## Heavy duty steel bar clamps

- Designed to meet the demanding needs of industrial workloads.
- IBeam is very stiff and much better at resisting bend or twist over a long distance than other clamps.
- For powerful clamping of all types, where strength and straightness over a distance are crucial.
- Ideal for high-demand industrial & institutional woodworking.
- Tough ductile powder coated castings.
- Nickel plated rail resists corrosion.
- 5 strong, hardened steel clutch plates aid with gripping the bar stock
- Crank handle for tremendous strength and long term durability
- ACME threaded screws with  $\frac{3}{8}$ " spindle diameter.

	Clamping Capacity	Throat Depth	Jaw Width	Clamping Force	Pieces Shipped	Price
IBEAM24	24"	2"	1 $\frac{3}{4}$ "	7000 lbs	2	\$37.15
IBEAM30	30"	2"	1 $\frac{3}{4}$ "	7000 lbs	2	\$38.17
IBEAM36	36"	2"	1 $\frac{3}{4}$ "	7000 lbs	2	\$39.17
IBEAM48	48"	2"	1 $\frac{3}{4}$ "	7000 lbs	2	\$43.18



FROM  
**37<sup>15</sup>**

# Ratcheting spring clamp, XCRG

- Heavy duty resin construction.
- Great for light duty jobs that require a deeper throat depth.
- Easy to attach and a quick one-hand release.
- Ergonomic 2-component handle.
- Rapid-action clamping with positive locking mechanism and riveted pivoting clamp for secure clamping on a variety of shapes and work surfaces and pads won't fall off.

	Clamping Capacity	Throat Depth	Price
XCRG2	2 $\frac{1}{4}$ "	2"	\$5.49
XCRG4	4"	3"	\$7.49

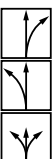


FROM  
**5<sup>49</sup>**



# Multi-use compact aviation snip, D15A

- Compact design for high performance with minimum effort.
- Smaller than typical aviation snip – for working in small spaces with all the power you need.
- For long continuous, straight and curved cuts.



	Overall Length	Blade Length	Cutting Capacity (carbon steel)	Price
D15A-BE	7 $\frac{3}{16}$ "	$\frac{13}{16}$ "	18 gauge	\$15.05
D15AL-BE	7 $\frac{3}{16}$ "	$\frac{13}{16}$ "	18 gauge	\$15.05
D15S-BE	7 $\frac{3}{16}$ "	$\frac{13}{16}$ "	18 gauge	\$15.05



Your Choice  
**15<sup>05</sup>**

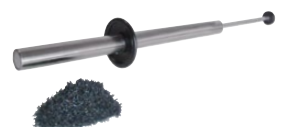


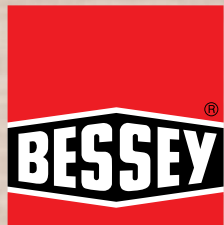
**46<sup>44</sup>**

# MagWand, MW

- Can collect up to 12 lbs of swarf in a pass for a cleaner safer welding and machine shop.
- Rolls easily over industrial work surfaces and dumps waste by simply pulling and sliding the magnetic insert.

Description  
**MW-1** 15  $\frac{1}{2}$ " length





# Innovation

Simply better.

Distributed by:

## PowerGrip PG, heavy duty one-hand clamp

- A truly one-handed clamp: easy slide button positions the jaw quickly; squeeze the handle to hold the clamp in place; then simply turn the handle to apply full pressure.
- Comes with removable soft pressure caps.



FROM  
**34<sup>99</sup>**



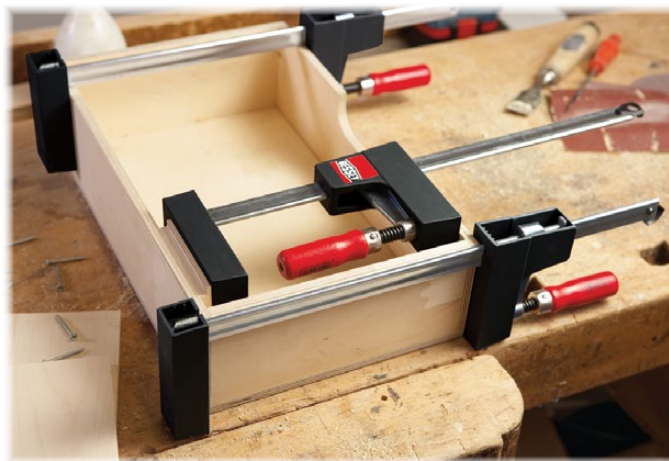
	Clamping Capacity	Throat Depth	Clamping Force	Price
<b>PG12</b>	12"	4"	1000 lbs	<b>\$34.99</b>
<b>PG24</b>	24"	4"	1000 lbs	<b>\$39.99</b>

## UniKlamp® case clamp

- This light duty universal case clamp is an ideal tool for many jobs around the shop.
- For clamping or spreading, the lower clamping pressures spread over a wider surface are gentler on delicate work surfaces and, the light weight means less fatigue during glue-ups.
- Removable end clip for conversion to a spreader.

	Clamping Capacity	Throat Depth	Clamping Force	Price
<b>UK3.006</b>	6"	3 1/8"	330 lbs	<b>\$19.34</b>
<b>UK3.012</b>	12"	3 1/8"	330 lbs	<b>\$20.80</b>
<b>UK3.024</b>	24"	3 1/8"	330 lbs	<b>\$22.24</b>

FROM  
**19<sup>34</sup>**



## Light duty, zinc die cast bar clamp, LM series

- Small, light weight and made of quality durable material.
- Step-over U shape clamps over small obstructions – apply clamping force where you need it.
- Comes with two plastic pressure caps.

	Clamping Capacity	Throat Depth	Clamping Force	Price
<b>LMU2.004</b>	4"	2"	330 lbs	<b>\$5.87</b>
<b>LMU2.006</b>	6"	2"	330 lbs	<b>\$6.53</b>
<b>LMU2.008</b>	8"	2"	330 lbs	<b>\$6.80</b>



FROM  
**5<sup>87</sup>**



### Newsletter & Offers...

Sign up for news & exclusive offers from BESSEY® by emailing your request to [info@besseytools.com](mailto:info@besseytools.com)

### Join us on...

[facebook.com/BesseyToolsNorthAmerica](https://www.facebook.com/BesseyToolsNorthAmerica)  
[instagram.com/besseytools\\_na/](https://www.instagram.com/besseytools_na/)  
[twitter.com/BesseyTools](https://twitter.com/BesseyTools)  
[youtube.com/user/BesseyTools](https://www.youtube.com/user/BesseyTools)  
[besseytools.com](http://besseytools.com)

